



HEALTH
SYSTEMS

Town Hall: Triennial Needs Assessment Circuit 5

Agenda

- Welcome and Introductions
- Triennial Needs Assessment: Why? What does LSFHS do with the data?
- FY 20-21 / 21-22 Budget Reduction Exercise
- Community Input / Survey Results / Focus Group
- Top Five Needs, Emerging Issues and Strategic Initiatives
- Circuit 5 Statistics
- Q & A

Why?

- The long-term goal of a Community Health Needs Assessment is to identify health priorities and develop impact strategies with all health-related stakeholders in the community.
- LSFHS will use this assessment as a call to action, engaging providers, consumers, stakeholders and community members, in creating effective programs and policies and collaborating with other organizations to bring positive change to our communities.
- This assessment will serve to inform the development of the LSF Health Systems Strategic Plan for 2020-2023 and the annual enhancement plans submitted to the Department of Children and Families to address unmet needs.

Methodology



Generally, the health of a community is measured by the physical, mental, environmental and social well-being of its residents. Due to the complex determinants of health, the Behavioral Health Needs Assessment is driven by both quantitative and qualitative data collecting and analysis from both primary and secondary data sources.

Methodology

- **Social determinants of health** including socioeconomic demographics, poverty rates, population demographics, uninsured population estimates and educational attainment levels
- **Community Health status** including County Health Rankings, CDC's Behavioral Risk Factor Surveillance Survey, and hospital utilization data.

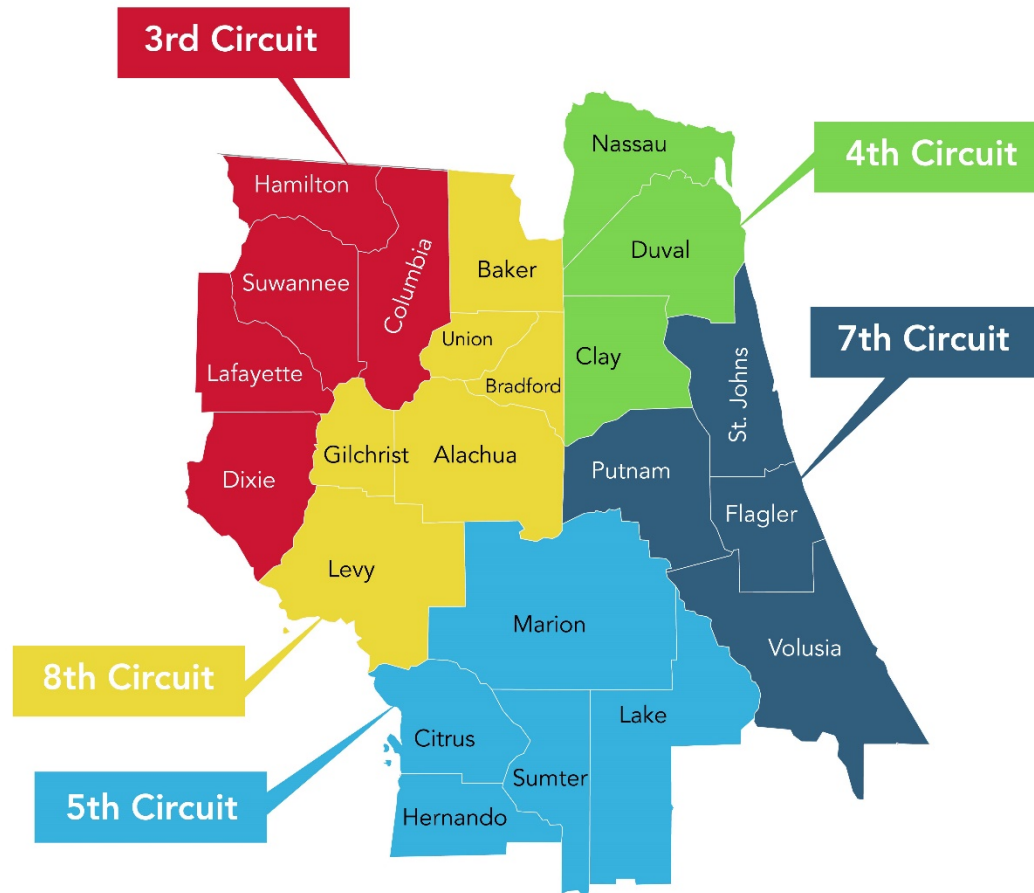
Methodology

- **Health system assessment** including insurance coverage (public and private), Medicaid eligibility, health care expenditures by payor source, hospital utilization data, physician supply rate and health professional shortage areas
- **Community input** including surveys of consumers, providers and stakeholders as well as focus groups in each Circuit. The data collected through these processes as well as LSFHS service utilization data were analyzed for trends and community priorities



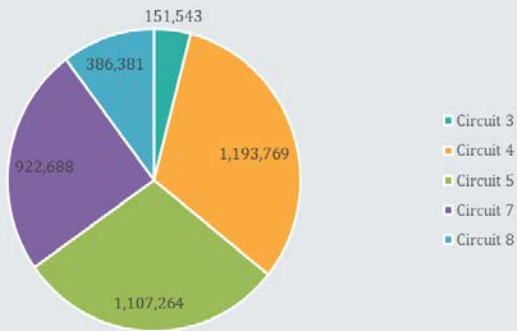
HEALTH
SYSTEMS

LSF Service Area

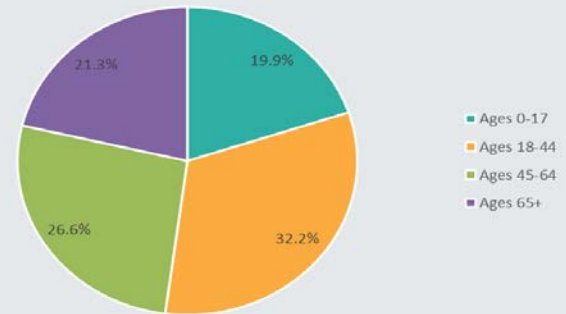


Service Area Population

- Total Population
2013-2017**



- Population by Age Group
2013-2017**



Community Input



Consumer Survey- Mental Health Services

Attributes	Number (Percent) n = 110					
	Always	Most Times	Sometimes	Rarely	Never	Does Not Apply
When I need an appointment, I can schedule one soon enough to meet my needs	45 (40.9)	29 (26.4)	19 (17.3)	5 (4.5)	5 (4.5)	7 (6.4)
Provider hours are convenient for me	53 (48.2)	28 (25.5)	19 (17.3)	2 (1.8)	2 (1.8)	6 (5.5)
I have transportation to the provider	61 (55.5)	18 (16.4)	13 (11.8)	5 (4.5)	2 (1.8)	11 (10.0)
Staff at provider office respect my privacy	78 (70.9)	16 (14.5)	6 (5.5)	2 (1.8)	2 (1.8)	6 (5.5)
Staff at provider office are available to help me when I have questions	66 (60.0)	22 (20.0)	12 (10.9)	3 (2.7)	1 (0.9)	6 (5.5)
Staff at provider office are nice to me	74 (67.3)	18 (16.4)	8 (7.3)	3 (2.7)	1 (0.9)	6 (5.5)
Amount of time provider spends with me is acceptable	63 (57.3)	26 (23.6)	11 (10.0)	3 (2.7)	1 (0.9)	6 (5.5)
I am satisfied with the care received	65 (59.0)	19 (17.3)	13 (11.8)	5 (4.5)	2 (1.8)	6 (5.5)
My provider coordinates my care with other healthcare providers	51 (46.4)	19 (17.3)	12 (10.9)	9 (8.2)	5 (4.5)	14 (12.7)
My personal needs are considered by provider	65 (59.0)	21 (19.0)	11 (10.0)	4 (3.6)	3 (2.7)	6 (5.5)
I make decisions about my care	64 (58.2)	23 (20.9)	11 (10.0)	4 (3.6)	1 (0.9)	7 (6.4)
I am getting better	60 (54.5)	27 (24.5)	10 (9.0)	4 (3.6)	1 (0.9)	8 (7.3)

Consumer Survey-Substance Abuse Services

Attributes	Number (Percent) n = 131					
	Always	Most Times	Sometimes	Rarely	Never	Does Not Apply
When I need an appointment, I can schedule one soon enough to meet my needs	62 (47.3)	28 (21.4)	19 (14.5)	6 (4.60)	3 (2.3)	13 (10.0)
Provider hours are convenient for me	67 (51.1)	34 (26.0)	11 (8.4)	5 (3.8)	4 (3.0)	10 (7.6)
I have transportation to the provider	74 (56.5)	21 (16.0)	10 (7.6)	7 (5.3)	3 (2.3)	16 (12.2)
Staff at provider office respect my privacy	84 (64.1)	23 (17.6)	11 (8.4)	4 (3.0)	1 (0.7)	8 (6.1)
Staff at provider office are available to help me when I have questions	78 (59.5)	23 (17.6)	14 (10.7)	6 (4.6)	2 (1.5)	8 (6.1)
Staff at provider office are nice to me	81 (61.8)	24 (18.3)	14 (10.7)	2 (1.5)	2 (1.5)	8 (6.1)
Amount of time provider spends with me is acceptable	71 (54.2)	32 (24.4)	13 (10.0)	3 (2.3)	3 (2.3)	9 (6.9)
I am satisfied with the care received	73 (55.7)	35 (26.7)	9 (6.9)	4 (3.1)	2 (1.5)	8 (6.1)
My provider coordinates my care with other healthcare providers	65 (49.6)	29 (22.1)	16 (12.2)	3 (2.3)	4 (3.1)	14 (10.7)
My personal needs are considered by provider	69 (52.7)	28 (21.4)	18 (13.7)	4 (3.1)	2 (1.5)	10 (7.6)
I make decisions about my care	74 (67.3)	23 (20.9)	18 (13.7)	4 (3.1)	3 (2.3)	9 (6.9)
I am getting better	78 (70.9)	32 (24.4)	10 (7.6)	1 (0.7)	3 (2.3)	7 (5.3)

Consumer Survey – Barriers to Treatment

Barriers	Number (Percent) (Top responses in shaded boxes)			
	Survey Respondents n = 155		Adults/Children under Survey Respondent Guardianship or Care n = 22	
			Type of Services	
	Mental Health	Substance Use	Mental Health	Substance Use
Cost	37 (23.9)	42 (27.0)	6 (27.3)	1 (4.5)
No insurance or insurance does not cover service	45 (29.0)	37 (23.9)	4 (18.0)	0
Transportation	36 (23.2)	43 (27.7)	6 (27.3)	0
Location of service	16 (10.3)	20 (12.9)	7 (31.8)	0
Childcare not available	6 (3.9)	9 (5.8)	0	0
Was in jail	19 (12.3)	25 (16.1)	1 (4.5)	0
Not aware service was available	15 (9.7)	24 (15.5)	2 (9.0)	1 (4.5)
Service was not available when it was needed	14 (9.0)	18 (11.6)	2 (9.0)	1 (4.5)
Could not get a referral	8 (5.2)	11 (7.0)	3 (13.6)	0
Stigma	19 (12.3)	25 (16.1)	3 (13.6)	0
I (he/she) refused services offered	7 (4.5)	11	3 (13.6)	1 (4.5)
Work-related problem (no paid time off, etc.)	4 (2.6)	7 (4.5)	1 (4.5)	0
Others included: homelessness, on waiting list, did not want help	24 (15.5)	3 (1.9)	0	0



HEALTH
SYSTEMS

Provider Survey – Services that need to be Increased or Expanded to Meet Community Need

Services	Number (Percent)
Individual Counseling – Mental Health	147 (44.1)
Psychiatry	122 (36.6)
Individual Counseling – Substance Abuse	108 (32.4)
Case Management	90 (27.0)
Inpatient Treatment (overnight)	80 (24.0)
Support Groups	61 (18.3)
Group Counseling – Mental Health	59 (17.7)
Group Counseling – Substance Abuse	59 (17.7)
Family Therapy	52 (15.6)
Primary Care	49 (14.7)
Drop-In Center	37 (11.1)
Other: Housing 10 (3.0), Detox beds 6 (1.8), Residential treatment services 5 (1.5), Services for Adolescents 5 (1.5), Clubhouse Services 2 (0.6), Prevention Services 2 (0.6)	30 (9.0)

Provider Survey – Top Barriers Providers Face in Trying to Meet Consumers Needs

Barriers	Number (Percent)
Funding	240 (72.0)
Adequate staffing	137 (41.1)
Client's lack of housing	109 (32.7)
Client's lack of payment source or funding	93 (27.9)
Ensuring client access to services	87 (26.1)
Staff burnout	83 (24.9)
Rate of reimbursement	39 (11.7)
Staff attrition	27 (8.1)
Client's lack of access to medications	27 (8.1)
Policies	26 (7.8)
Regulations	18 (5.4)
Workforce development	14 (4.2)
Infrastructure	13 (3.9)
Education level of providers	9 (2.7)
Client's arrest	4 (1.2)
Other: Pay scale/competitive pay for staff 5 (1.5), Transportation 4 (1.2), Parental involvement 4 (1.2), Lack of prevention 2 (0.6)	15 (4.5)



HEALTH
SYSTEMS

Provider Survey – Top Barriers Consumers Face in Accessing Services

Barriers	Number (Percent)
Transportation to services	166 (49.8)
Insurance issues (e.g., no insurance coverage, high deductibles)	145 (43.5)
Motivation or desire to receive services	132 (39.6)
Availability of services when needed	118 (35.4)
Cost	114 (34.2)
Stigma	81 (24.3)
Lack of awareness of service availability	55 (16.5)
Location of services	41 (12.3)
Work-related issues (e.g., no paid leave, denied leave time)	32 (9.6)
Lack of referral from other providers (e.g., primary care physician)	19 (5.7)
Refused services by provider	15 (4.5)
Incarceration	14 (5.2)
Childcare issues	12 (3.6)
Other: Homelessness 1 (0.3), sense of entitlement 1 (0.3)	2 (0.6)

Stakeholder Survey – Top Barriers to Meeting Residents Needs for Mental Health Services

Barriers	Number (Percent) Top responses in shaded boxes
Demand (e.g., growing need for services, can't keep up with need)	99 (53.2)
Funding	123 (66.1)
Insurance issues (e.g., lack of insurance companies that serve this area, new or no providers that accept insurance plan, adequate coverage, high deductibles and co-pays)	89 (47.8)
Lack of mental health care professionals	83 (44.6)
Need of community collaboration and/or community partners	50 (26.9)
Not a priority	20 (10.8)
Political constraints, issues and/or will	14 (7.5)
Stigma	67 (36.0)
Transportation	7 (3.8)
Other: Patience non-compliance, medication costs, culturally competent care, no options beyond parole 1 each (.55 each)	4 (2.2)

Stakeholder Survey – Top Barriers to Meeting Residents Needs for Substance Abuse Services

Barriers	Number (Percent) Top responses in shaded box
Demand (e.g., growing need for services, can't keep up with need)	107 (57.5)
Funding	123 (66.1)
Insurance issues (e.g., lack of insurance companies that serve this area, new or no providers that accept insurance plan, adequate coverage, high deductibles and co-pays)	84 (45.2)
Lack of substance use treatment and prevention professionals	84 (45.2)
Need of community collaboration and/or community partners	54 (29.0)
Not a priority	25 (13.4)
Political constraints, issues and/or will	20 (10.8)
Stigma	53 (23.5)
Other: Transportation 4 (2.2), Rehab/aftercare 3 (1.6), Addressing root causes 1 (0.5), comorbidity of alcohol abuse 1 (0.5)	9 (4.8)

Provider Focus Groups

- Strengths:
 - Evidence-based Practices
 - No Wrong Door
 - ROSC
- Challenges:
 - Lack of adequate resources/funding
 - Lack of flexibility in funding
 - Difficulty recruiting and retaining staff
 - Data platforms

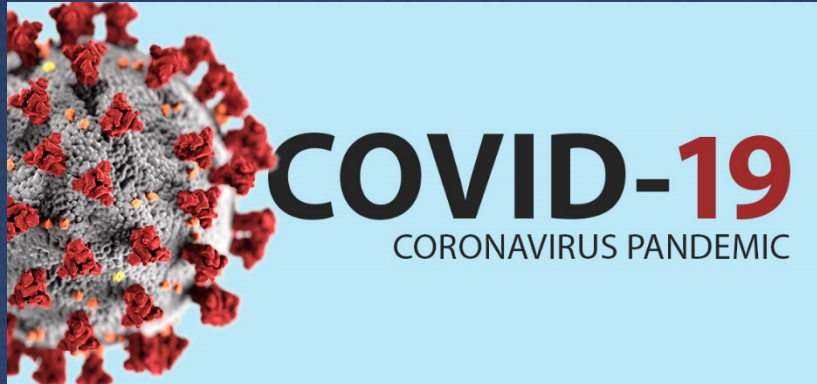
Top Five Needs, Emerging Issues and Strategic Initiatives



Top 5 Needs

- Short Term Residential Treatment Beds
- Substance Abuse Detox, Residential Treatment Beds and Outpatient SA treatment
- Care Coordination and Housing Vouchers to stabilize and support individuals in the community
- Co-Responder Teams to divert individuals from acute care and justice system
- Workforce Investment to recruit and retain qualified staff in key positions

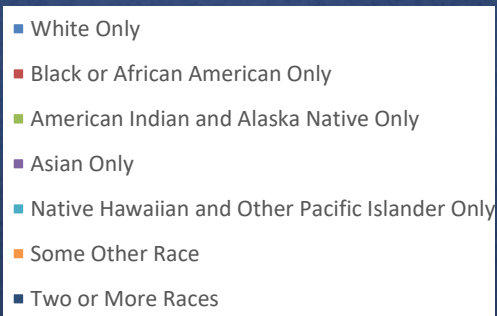
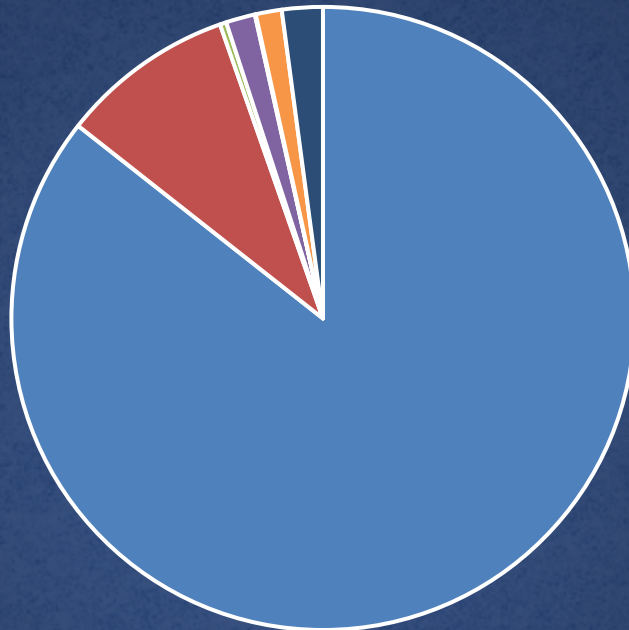
Emerging Issues



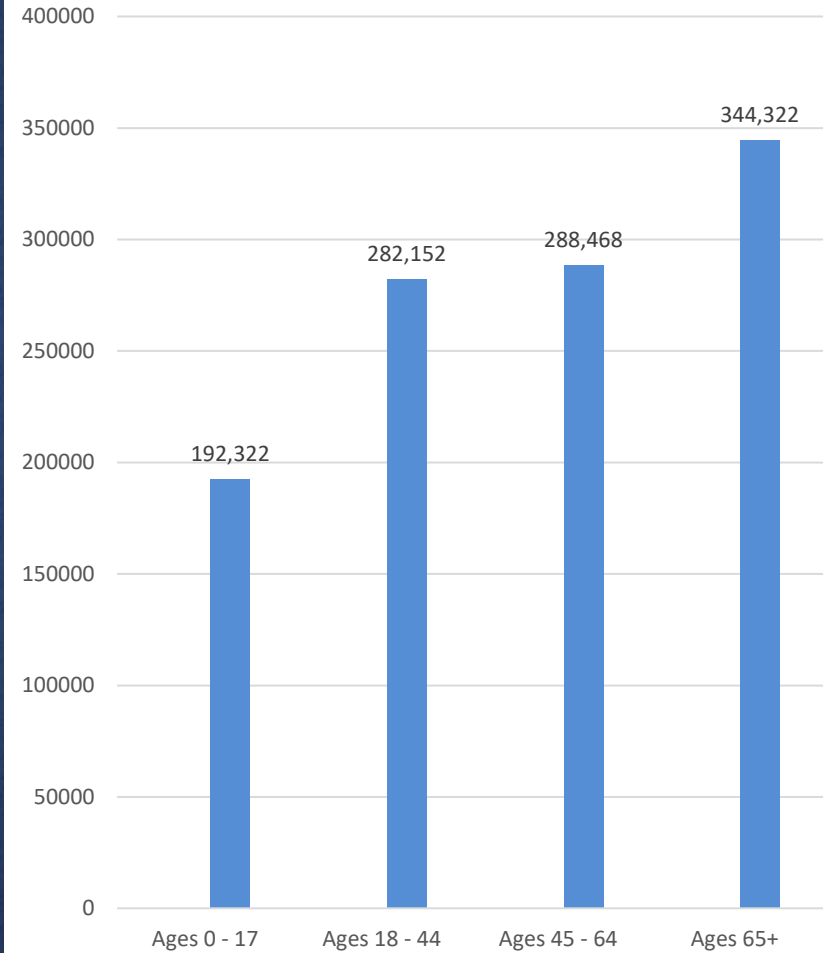


Circuit 5 Population

Circuit 5 Population by Race



Population by Age





Circuit 5

Social Determinants of Health





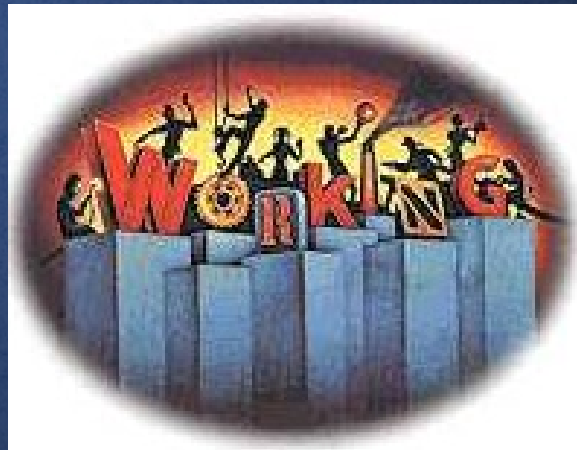
Circuit 5 Education

	Estimated Population 25 + yrs. Of age	All Genders		Males		Females	
Area		Estimated Number	Estimated Percent	Estimated Number	Estimated Percent	Estimated Number	Estimated Percent
No High School Diploma *							
Citrus	112,033	14,146	12.6	7,433	6.6	6,713	6.0
Hernando	133,405	16,324	12.2	8,862	6.6	7,462	5.6
Lake	239,378	27,240	11.4	15,192	6.3	12,048	5.0
Marion	255,204	33,768	13.2	17,027	6.7	16,741	6.6
Sumter	104,244	8,728	8.4	5,275	5.1	3,453	3.3
Circuit 5	844,264	100,206	11.9	53,789	6.4	46,417	5.5
Florida	14,396,066	1,787,348	12.4	912,378	6.3	874,970	6.1
High School Diploma **							
Citrus	112,033	68,035	60.7	31,664	28.3	36,371	32.5
Hernando	133,405	80,529	60.4	37,571	28.2	42,958	32.2
Lake	239,378	134,263	56.1	62,683	26.2	71,580	29.9
Marion	255,204	149,595	58.6	69,616	27.3	79,979	31.3
Sumter	104,244	54,933	52.7	25,850	24.8	29,083	27.9
Circuit 5	844,264	487,355	57.7	227,384	26.9	259,971	30.8
Florida	14,396,066	7,107,792	49.4	3,401,323	23.6	3,706,469	25.7
College Degree ***							
Citrus	112,033	29,852	26.6	14,169	12.6	15,683	14.0
Hernando	133,405	36,552	27.4	16,226	12.2	20,326	15.2
Lake	239,378	77,875	32.5	35,799	15	42,076	17.6
Marion	255,204	71,841	28.2	33,112	13	38,729	15.2
Sumter	104,244	40,583	38.9	21,051	20.2	19,532	18.7
Circuit 5	844,264	256,703	30.4	120,357	14.3	136,346	16.1
Florida	14,396,066	5,500,926	38.2	2,590,471	18	2,910,455	20.2

* No diploma **HS diploma or equivalency, some college no degree *** College degree, AA or higher

Circuit 5 Unemployment

Area	Total Population 16+ years	Labor Force Participation Rate		Unemployment Rate	
Citrus	122,938	50,282	40.9	12,171	9.9
Hernando	149,770	70,242	46.9	13,180	8.8
Lake	269,018	141,772	52.7	19,369	7.2
Marion	286,877	132,250	46.1	25,819	9.0
Sumter	109,138	25,538	23.4	7,203	6.6
Circuit 5	937,741	420,085	44.8	77,742	8.3
Florida	16,645,386	9,770,842	58.7	1,198,468	7.2



Circuit 5 Poverty

	Estimated Total Population	< 100 Percent of Poverty		< 150 Percent of Poverty		< 200 Percent of Poverty		< 300 Percent of Poverty	
Area		Estimated Number	Estimated Percent	Estimated Number	Estimated Percent	Estimated Number	Estimated Percent	Estimated Number	Estimated Percent
Citrus	138,743	24,123	17.4	39,930	28.8	55,282	39.8	83,191	60.0
Hernando	176,462	25,322	14.3	45,104	25.6	66,315	37.6	104,654	59.3
Lake	322,123	41,353	12.8	76,795	23.8	109,548	34	171,249	53.2
Marion	333,886	58,762	17.6	96,802	29.0	136,167	40.8	205,415	61.5
Sumter	107,432	9,895	9.2	17,530	16.3	26,569	24.7	46,342	43.1
Circuit 5	1,078,646	159,455	14.8	276,161	25.6	393,881	36.5	610,851	56.6
Florida	19,858,469	3,070,972	15.5	5,162,521	26.0	7,225,020	36.4	10,827,573	54.5



[This Photo](#) by Unknown Author is licensed under [CC BY-NC-ND](#)

Circuit 5 Housing

Florida Point in Time Count of Homeless Individuals

County	2015	2016	2017	2018	2019
Citrus	180	224	175	169	262
Hernando	218	143	189	182	151
Marion	787	823	725	571	475
Lake	265	198	242	312	254
Sumter	68	30	29	48	10
Florida	35,964	33,502	32,109	29,717	28,590

Circuit 5 Housing

Households with Severe Housing Cost Burden

	Severe housing cost burden	
County	# Households with Severe Cost Burden	% Severe Housing Cost Burden
Florida	1,289,294	18
Citrus	7,475	12
Hernando	8,960	13
Lake	16,414	13
Marion	16,536	13
Sumter	5,377	11

Circuit 5

Access to Healthcare





Circuit 5 Insured Population

Insured and Uninsured Children ages 0-18

Area	Total Estimated Number	Insured		Uninsured	
		Total Estimated	Percent Estimated	Total Estimated	Percent Estimated
Citrus	22,206	20,529	92.0	1,677	7.6
Hernando	35,314	32,120	91.0	3,194	9.0
Lake	67,406	62,184	92.0	5,222	7.7
Marion	67,684	62,481	92.0	5,203	7.7
Sumter	9,145	7,990	87.0	1,155	12.6
Circuit 5	201,755	185,304	92.0	16,451	8.2
Florida	4,350,247	3,980,351	91.0	369,896	8.5

Insured and Uninsured Adults age 19++

Area	Total Estimated Number	Insured		Uninsured	
		Total Estimated	Percent Estimated	Total Estimated	Percent Estimated
Citrus	117,104	102,757	87.7	14,347	12.3
Hernando	141,879	121,635	85.7	20,244	14.3
Lake	255,455	221,402	86.7	34,053	13.3
Marion	267,602	227,540	85.0	40,062	15.0
Sumter	98,439	92,614	94.1	5,825	5.9
Circuit 5	880,479	765,948	87.0	114,531	13.0
Florida	15,617,684	13,004,635	83.3	2,613,049	16.7

Circuit 5 Healthcare Population to Provider Ratios

	Primary care physicians		Dentists		Mental health providers	
County	# Primary Care Physicians	PCP Ratio	# Dentists	Dentist Ratio	# Mental Health Providers	MHP Ratio
Florida	14,865	1387:1	12,314	1704:1	31,466	667:1
Citrus	77	1865:1	42	3468:1	85	1713:1
Hernando	94	1945:1	67	2784:1	145	1287:1
Lake	242	1386:1	161	2149:1	283	1223:1
Marion	205	1703:1	150	2362:1	318	1114:1
Sumter	45	2755:1	31	4038:1	51	2454:1

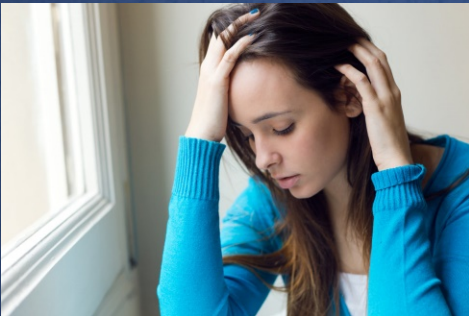


Circuit 5

Youth Behavioral Health Indicators



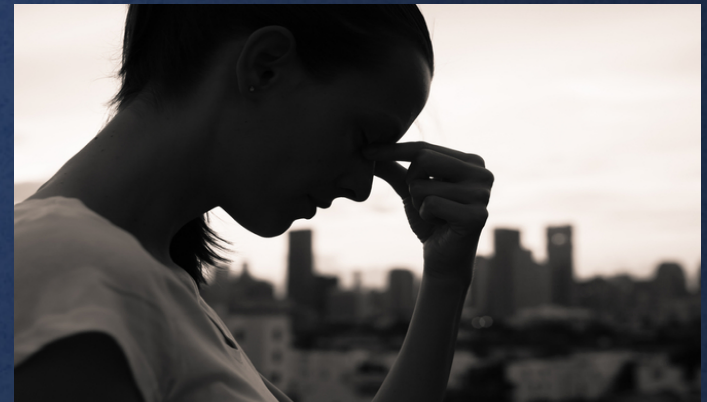
Students Reporting “Sometimes I think Life is Not Worth It”



	2018		
Area	Total In Survey	Percent	Estimated Number
Citrus	891	35.0	312
Hernando	948	29.4	279
Lake	1,209	30.5	369
Marion	1,043	31.3	326
Sumter	864	26.9	232
Circuit 5	4,955	30.6	1,518
Florida	54,611	28.2	15,400

Students Reporting “At Times I Think I Am No Good At All”

2018			
Area	Total In Survey	Percent	Estimated Number
Citrus	891	46.3	413
Hernando	948	40.6	385
Lake	1,209	42.5	514
Marion	1,043	42.0	438
Sumter	864	35.8	309
Circuit 5	4,955	41.5	2,059
Florida	54,611	39.7	21,681





Students Reporting Feeling Depressed or Sad Most Days

	2018		
Area	Total In Survey	Percent	Estimated Number
Citrus	891	46.1	411
Hernando	948	40.1	380
Lake	1,209	45.0	544
Marion	1,043	48.2	503
Sumter	864	35.3	305
Circuit 5	4,955	43.2	2,143
Florida	54,611	42.6	23,264

Students Reporting Using Illicit Drugs or Alcohol in their Lifetime

	2014		2016		2018	
Area	Total In Survey	Percent	Total In Survey	Percent	Total In Survey	Percent
Citrus	739	56.4	972	50.7	891	43.6
Hernando	1,011	50.5	918	46.9	948	42.4
Lake	1,233	48.9	1,282	45.2	1,209	45.3
Marion	1,295	49.9	915	41.7	1,043	46.4
Sumter	810	44.3	901	41.9	864	37.1
Circuit 5	5,088	49.8	4,988	45.3	4,955	43.2
Florida	65,917	48.5	65,776	44.8	54,611	42.9

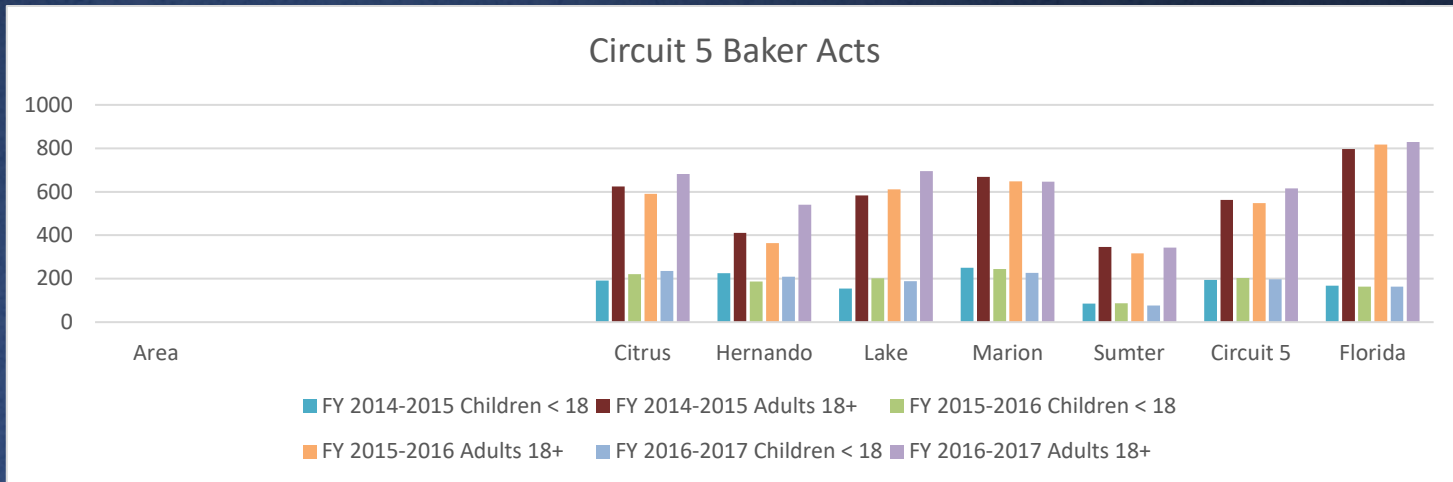




Students Reporting Using Illicit Drugs or Alcohol in Past 30 Days

	2014		2016		2018	
Area	Total In Survey	Percent	Total In Survey	Percent	Total In Survey	Percent
Citrus	739	35.6	972	28.6	891	23.5
Hernando	1,011	26.6	918	25.8	948	22.6
Lake	1,233	26.8	1,282	21.1	1,209	21.4
Marion	1,295	29.1	915	22.8	1,043	23.2
Sumter	810	25.9	901	21.7	864	22.0
Circuit 5	5,088	28.5	4,988	23.8	4,955	22.5
Florida	65,917	27.0	65,776	24.3	54,611	42.9

Circuit 5 Baker Acts



	FY 2014-2015		FY 2015-2016		FY 2016-2017	
	Children < 18	Adults 18+	Children < 18	Adults 18+	Children < 18	Adults 18+
Area	Rate Per 100,000 Total Population	Rate Per 100,000 Total Population	Rate Per 100,000 Total Population	Rate Per 100,000 Total Population	Rate Per 100,000 Total Population	Rate Per 100,000 Total Population
Citrus	191.8	624.3	221.2	590.1	235.6	681.5
Hernando	225.8	410.4	187.2	363.7	208.9	540.9
Lake	154.6	583.1	201.6	610.6	188.3	694.5
Marion	250.1	668.5	244.7	647.7	226.2	646.1
Sumter	85.5	346.5	86.5	316.4	75.9	343.2
Circuit 5	193.9	562.7	203.1	548.4	197.5	615.5
Florida	167.4	796.3	164.0	816.8	162.7	829.6

Percent of Adults Reporting Good Health

	Good Mental Health		
Area	2010	2013	2016
Circuit 5			
Citrus	85.8	81.8	86.6
Hernando	84.5	86.6	85.6
Lake	91.3	89.7	87.5
Marion	85.2	88.4	87.1
Sumter	86.9	87.4	93.3
Florida	88.2	87.3	88.6

	Good Physical Health		
Area	2010	2013	2016
Circuit 5			
Citrus	84.8	81.4	80.6
Hernando	86.3	81.3	82.1
Lake	85.1	85.9	84.6
Marion	86.4	87.8	80.4
Sumter	92.1	85.5	84.5
Florida	87.4	85.9	87.1



Average Number of Reported Unhealthy Days

	Average Number of Unhealthy Mental Days in the Past 30 Days		
Area	2010	2013	2016
Circuit 5			
Citrus	4.1	5.4	3.8
Hernando	4.8	4.3	4
Lake	2.9	3.5	3.9
Marion	4.3	3.6	3.9
Sumter	4.3	3.8	2.1
Florida	3.8	4.1	3.6

	Average Number of Unhealthy Physical Days in the Past 30 Days		
Area	2010	2013	2016
Circuit 5			
Citrus	5.1	5.6	6.1
Hernando	4.9	5.8	5.5
Lake	4.4	4.2	4.3
Marion	4.5	4	5.7
Sumter	3.2	4.9	4.7
Florida	4.1	4.5	4

Mental Health Related Deaths per 100,000 Population

White	2015			2016			2017		
Area	Number	Crude Rate	Age- Adjusted Rate	Number	Crude Rate	Age- Adjusted Rate	Number	Crude Rate	Age- Adjusted Rate
Citrus	76	57.3	20.3	49	36.6	13.0	61	45.1	16.1
Hernando	70	43.4	18.4	97	59.4	25.5	43	26.0	11.1
Lake	219	81.2	36.3	184	66.9	29.6	187	66.6	29.9
Marion	122	43.0	18.8	88	30.7	13.4	121	41.7	19.0
Sumter	70	67.0	22.3	91	84.8	26.8	93	83.3	25.5
Circuit 5	557	58.5	24.0	509	52.7	21.4	505	51.3	21.2
Florida	6,754	43.6	23.7	6,555	41.7	22.4	6,922	43.4	23.1
Black	2015			2016			2017		
Area	Number	Crude Rate	Age- Adjusted Rate	Number	Crude Rate	Age- Adjusted Rate	Number	Crude Rate	Age- Adjusted Rate
Citrus	2	47.0	39.3	1	23.2	15.2	0	0.0	0.0
Hernando	0	0.0	0.0	6	59.7	48.6	0	0.0	0.0
Lake	10	29.8	38.0	7	20.1	25.7	10	27.7	32.3
Marion	8	17.7	19.6	10	21.8	21.1	9	19.2	18.9
Sumter	4	42.3	68.6	2	21.2	27.9	2	21.3	31.0
Circuit 5	24	23.5	26.2	26	24.9	25.7	21	19.6	20.3
Florida	612	18.3	26.9	641	18.8	26.3	659	19.0	26.2
Hispanic	2015			2016			2017		
Area	Number	Crude Rate	Age- Adjusted Rate	Number	Crude Rate	Age- Adjusted Rate	Number	Crude Rate	Age- Adjusted Rate
Citrus	1	13.7	14.0	0	0.0	0.0	1	12.7	10.0
Hernando	3	14.7	15.8	4	18.8	18.4	1	4.4	4.7
Lake	6	13.8	22.6	6	12.9	20.5	8	16.3	24.0
Marion	4	9.9	12.4	6	14.2	19.8	5	11.3	14.9
Sumter	1	15.5	19.0	1	15.0	15.5	1	14.6	16.3
Circuit 5	15	12.7	16.5	17	13.7	17.9	16	12.2	15.1
Florida	906	18.9	21.4	873	17.6	19.2	1,016	19.8	21.0



HEALTH
SYSTEMS

Suicide Deaths per 100,000 Population

Suicide Age-Adjusted Death Rate, Single Year Per 100,000, 2019

County	Count	Rate
All Florida Counties	3,427	14.5
Citrus	46	26.2
Hernando	43	19.9
Lake	78	20.0
Marion	79	19.0
Sumter	35	25.4



Top 10 Substances that were Cause of Death for Children 0-17

2017					
23-County Region				Florida	
Substance	Total Number	Percent of Total	Substance	Total Number	Percent of Total
Cocaine	3		30 Cocaine	9	18
Ethanol	1		10 Ethanol	5	10
Fentanyl	1		10 Fentanyl	5	10
Hydrocodone	1		10 Fentanyl Analogs	5	10
Methadone	1		10 Morphine	5	10
Methamphetamine	1		10 Heroin	4	8
Morphine	1		10 Alprazolam	3	6
Tramadol	1		10 Methamphetamine	3	6
Total	10		100 Oxycodone	3	6
			Halogenated inhalants	2	4
			Methadone	2	4
			Amphetamine	1	2
			Hydrocarbon Inhalants	1	2
			Hydrocodone	1	2
			Tramadol	1	2
			Total	50	100

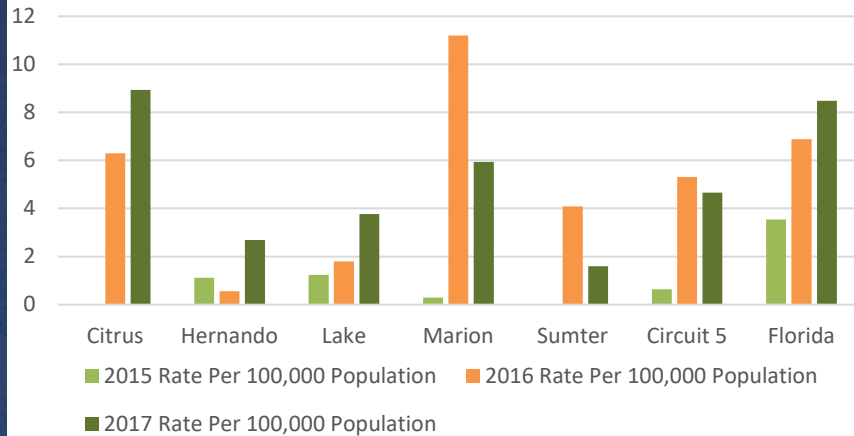


Top 10 Substances that were Cause of Death for Adults 18+

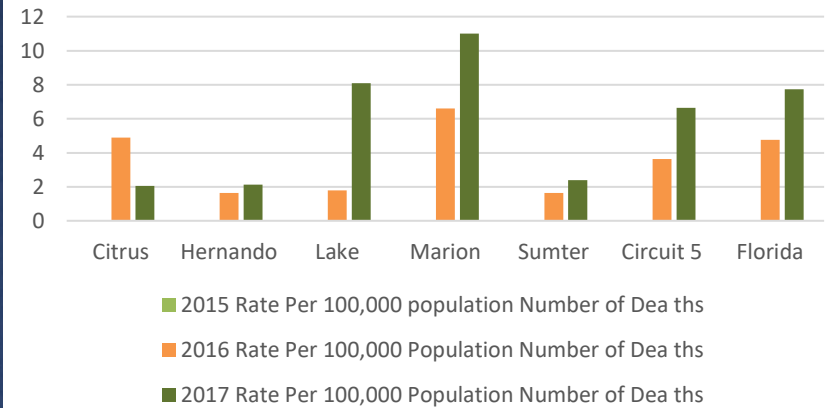
2017					
23-County Region			Florida		
Substance (Rank)	Total Number	Percent of Total	Substance (Rank)	Total Number	Percent of Total
Fentanyl (1)	430	16.8	Cocaine (1)	2,003	16
Cocaine (2)	381	14.9	Fentanyl (2)	1,738	13.9
Fentanyl Analogs (3)	291	11.3	Fentanyl Analogs (3)	1,583	12.6
Morphine (4)	261	10.2	Morphine (4)	1,280	10.2
Ethanol (5)	180	7	Ethanol (5)	970	7.7
Heroin (6)	174	6.8	Heroin (6)	940	7.5
Oxycodone (7)	138	5.4	Alprazolam (7)	788	6.3
Alprazolam (8)	119	4.6	Oxycodone (8)	607	4.8
Methamphetamine (9)	117	4.6	Methamphetamine (9)	461	3.7
Methadone (10)	72	2.8	Amphetamine (10)	255	2
All Others	401	15.6	All Others	1,906	15.2
Total	2,564	100	Total	12,531	100

Substance Abuse Related Deaths per 100,000 Population

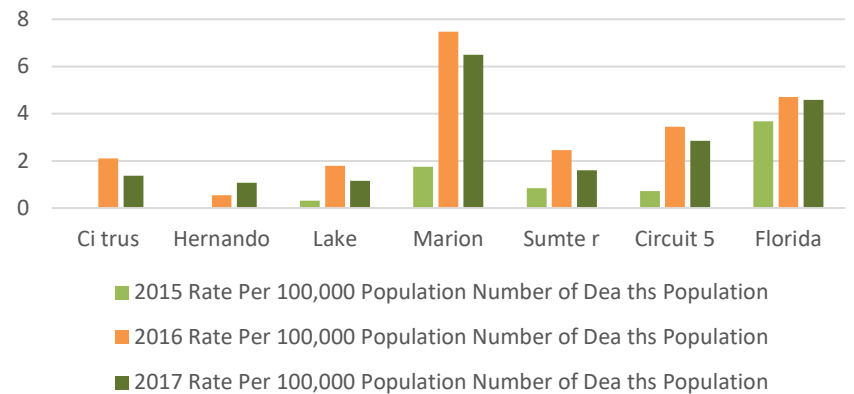
Fentanyl Deaths



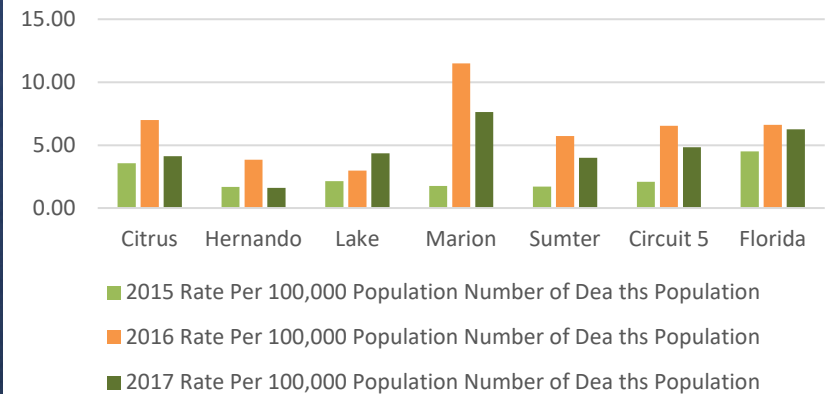
Fentanyl Analog Deaths



Heroin Deaths



Morphine Deaths



Q & A