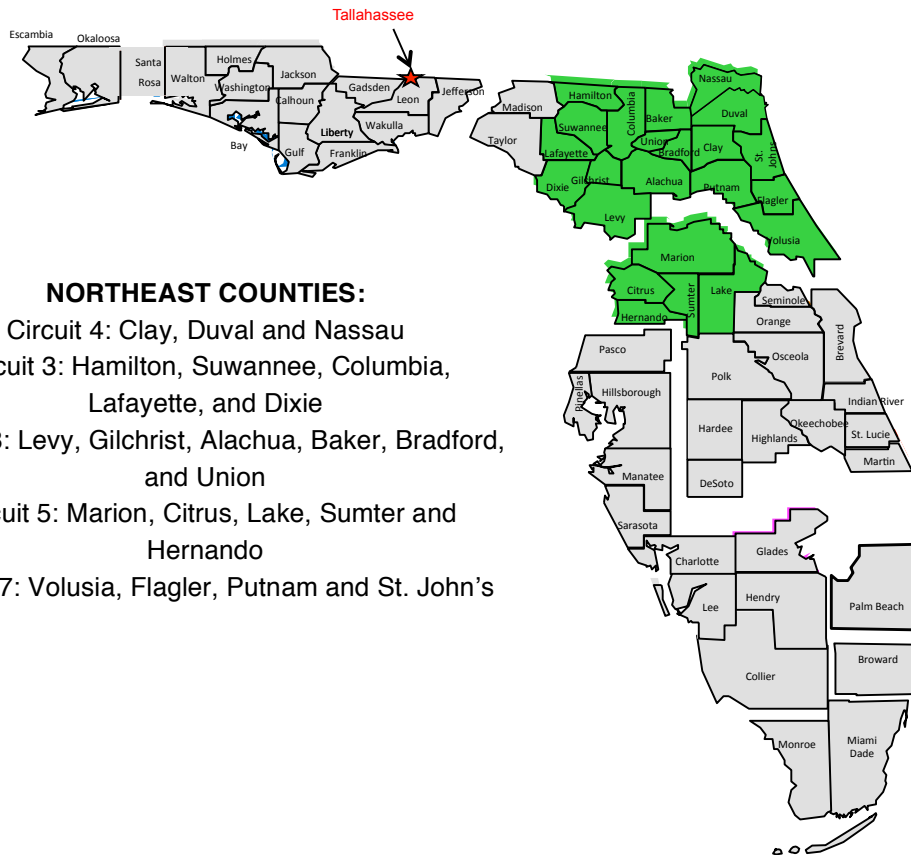


NORTHEAST FLORIDA

Needs Assessment and Indicator Report of Alcohol and Other Drug Use - 2014



NORTHEAST COUNTIES:

Circuit 4: Clay, Duval and Nassau

Circuit 3: Hamilton, Suwannee, Columbia, Lafayette, and Dixie

Circuit 8: Levy, Gilchrist, Alachua, Baker, Bradford, and Union

Circuit 5: Marion, Citrus, Lake, Sumter and Hernando

Circuit 7: Volusia, Flagler, Putnam and St. John's

COMMUNITY COALITION ALLIANCE



Prepared by the Community Coalition Alliance (CCA)
through Lutheran Florida Services
funded by the Florida Department of Children and Families

www.ccafl.org

COMMUNITY COALITION ALLIANCE



FLORIDA DEPARTMENT
OF CHILDREN AND FAMILIES
MYFLFAMILIES.COM

COMMUNITY COALITION ALLIANCE

435 Citrona Drive Fernandina
Beach FL 32034 us
904-277-3699

coalitionsofflorida@gmail.com
www.ccafl.org

MISSION:

To serve as the collective voice of community coalitions in the State of Florida while valuing the unique identity of each member of the alliance.

VISION:

Our vision is a state transformed community by community that provides all our residents a healthy, safe environment in which they can thrive.

Interested in learning more about implementing Environmental Strategies in your area? Visit <http://www.ccafl.org/strategies.html> for a list of strategy trainers.

Report Prepared by:
Lisa Hilko, MPA

Acknowledgements

Thank you to all of the CCA member coalitions who helped collect the data compiled in this report, as well as all of their community partners, including:

- Schools K-12
- Higher Education Institutions
- School Boards
- Treatment and Prevention Program Agencies
- Law Enforcement Agencies
- Local Governmental Agencies
- Businesses
- Media Partners
- Youth Serving Organizations
- Youth
- Parents
- Parent Organizations
- Religious and Fraternal Organizations
- Volunteer and Civic Organizations
- Healthcare Organizations
- Concerned Community Members

A special thank you to Lutheran Services Florida for supporting the efforts of the CCA coalitions and believing in our ability to reduce and prevent alcohol and other drug use in our communities.

Thank you to the Florida Department of Children and Families for your support of prevention efforts in the Northeast Region and across the State of Florida.

A note from the Executive Director:

I would like to thank the CCA Board of Directors, Susan Woodford, Susan Pitman, and Debi MacIntyre for guiding the CCA and having the vision and conviction to bring this project, as well as all efforts by the CCA, to fruition. I whole-heartedly believe the Northeast Region will benefit greatly in your efforts to make our communities safer and healthier.

I would also like to thank former Board Members Tresa Watson and Jonathon Lewis who put in countless hours to the CCA, and new members Katrina VanAernam and Lynn Kennedy for their service.

Thank you,
Susan Carrigan

Executive Director
Community Coalition Alliance

TABLE OF CONTENTS

LIST OF TABLES	4
LIST OF FIGURES	5
ABOUT US	6
WHAT COALITIONS ARE DOING	8
NEXT STEPS	11
EXECUTIVE SUMMARY	12
KEY POINTS	12
DATA SOURCES	14
AREA DESCRIPTION	16
RECENT SUBSTANCE USE	18
SUBSTANCE USE BEHAVIORS AND ATTITUDES	28
IMPAIRED DRIVING DATA	33
CRIME DATA	35
SCHOOL DATA	38
MORTALITY DATA	40
VENDOR DATA	43
STATE OF FLORIDA- ECONOMIC COSTS	47

LIST OF TABLES

Table 1: Population Demographics for Race/Ethnicity	16
Table 2: Population Demographics: Sex, Age, Language, and Income	17
Table 3: Past 30-day Alcohol Use by Northeast Florida Youth by County	18
Table 4: Past 30-day Binge Drinking Rates for Northeast Florida Youth by County	19
Table 5: Adult Alcohol Use Rates- 2010	20
Table 6: Past 30-day Marijuana Use for Northeast Florida Youth by County	21
Table 7: Past 30-day Synthetic Marijuana Use by Northeast Florida High School Students by County	22
Table 8: Past 30-day Cocaine Use for Northeast Florida Youth by County	23
Table 9: Past 30-day Depressant Use by Youth	24
Table 10: Past 30-day Prescription Pain Reliever Use by Youth	25
Table 11: Past 30-day Cigarette Use by Youth by County- 2012	26
Table 12: Adult Current Smokers	28
Table 13: DUI Arrests in the Northeast Region of Florida	33
Table 14: Youth Alcohol and Drug Arrest Data from County Sheriffs' Offices-2012	35
Table 15: Adult Alcohol and Drug Arrest Data from County Sheriffs' Offices- 2012	36
Table 16: Amount of Incidents for Crime and Violence in Northeast Florida Schools- 2008/2009 School Year	38
Table 17: Percentage of Youth that Feel Safe at School- 2010	38
Table 18: Out of school suspension- Rate per 1,000 students- 2011	39
Table 19: 2010 Youth Suicide Rates- Rates per 100,000	40
Table 20: Florida Alcohol Cases Identified by Medical Examiners in Toxicology Reports- 2012	40
Table 21: Benzodiazepines Tracked by Medical Examiners during Toxicology Reports at Time of Death- 2012	41
Table 22: Pain Killers Tracked by Medical Examiners during Toxicology Reports at Time of Death- 2012	41
Table 23: Cocaine and Heroin Cases Identified by the Medical Examiners during Toxicology Reports at Time of Death- 2012	41
Table 24: Total Prescription Drug Deaths Identified in Toxicology Reports by Medical Examiners	42
Table 25: Amount of Environmental Scans by Vendor Type- 2013	44
Table 26: Gas Station/Convenience Store Environmental Scan Results- 2013	44
Table 27: Grocery Store/Retail Store Environmental Scan Results - 2013	45
Table 28: Liquor Store Environmental Scan Results- 2013	45
Table 29: Smoke Shop Environmental Scan Results- 2013	46
Table 30: Bar/Club/Restaurant Environmental Scan Results- 2013	46
Table 31: Cost of Underage Drinking	47
Table 32: State of Florida Economic Costs of Adverse Events of Alcohol Use	47
Table 33. State of Florida Economic Costs of Adverse Events of Drug Use	48

LIST OF FIGURES

Figure 1: Past 30-day Alcohol Use by Youth	18
Figure 2: Past 30-day Binge Drinking Rates by Youth.....	19
Figure 3: Past 30-day Marijuana Use by Youth.....	21
Figure 4: Past 30-day Synthetic Marijuana Use by High School Students.....	22
Figure 5: Past 30-day Cocaine Use by Youth	23
Figure 6: Past 30-day Depressant Use by Youth.....	24
Figure 7: Past 30-day Prescription Pain Reliever Use by Youth	25
Figure 8: Past 30-day Cigarette Use by Youth- 2012	26
Figure 9: Past 30-day Cigar Use by Youth- 2012	27
Figure 10: Past 30-day Smokeless Use by Youth- 2012	27
Figure 11: Past 30-day Any Tobacco Use by Youth- 2012	28
Figure 12: Youth Usual Source of Alcohol for Youth Who Drank in Past-30 Days.....	29
Figure 13: Youth Usual Drinking Location for Youth Who Drank in Past-30 Days.....	29
Figure 14: Amount of Students who Perceive a Great Risk or Harm of Substance Use	30
Figure 15: Percentages of Northeast Region Youth and Florida Statewide Youth who Reported Engaging in Delinquent Behavior within the Past 12 Months- 2012	30
Figure 16: Amount of Youth Exposed to Secondhand Smoke in the Past 7 Days- 2012	31
Figure 17: Smoking is Allowed in the Home- 2012	31
Figure 18: Parents have Talked About Tobacco in the Past Year- 2012	32
Figure 19: Amount of Alcohol Crashes and Fatal Crashes in Northeast Florida.....	33
Figure 20: Amount of High School Students who Report Riding in a Vehicle within the Past 30-Days Driven by Someone who had been Drinking Alcohol or Using Marijuana- 2012.....	33
Figure 21: Amount of High School Students who Reported Driving a Vehicle within the Past 30-Days after Drinking Alcohol or Using Marijuana- 2012	34
Figure 22: Drug/Narcotic Arrests in the Northeast Region of Florida.....	35
Figure 23: Percentage of Youth Who Report Alcohol and Other Drug Use at Time of Arrest- 2011/2012	36
Figure 24: Motivation of Crime Reported by Youth at Time of Arrest- 2011/2012	37
Figure 25: Amount of Incidents for Crime and Violence in Northeast Florida Schools by Type of Incident- 2008/2009 School Year.....	38
Figure 26: Total Prescription Drug Deaths Identified in Toxicology Reports by Medical Examiners	42
Figure 27: Amount of Alcohol and Tobacco Licenses in the Northeast Region- 2013	43
Figure 28: Amount of Liquor Law Violations in the Northeast Region	43

ABOUT US

In Florida, the Department of Children and Families (DCF) Substance Abuse and Mental Health (SAMH) program office, allocates funding to sub-state Regions who manage contracts for behavioral health services at the regional level. The Northeast Region is comprised of 23 Counties, (Clay, Duval, Nassau, St. Johns, Putnam, Flagler, Volusia, Marion, Citrus, Hernando, Lake, Sumter, Alachua, Levy, Gilchrist, Baker, Bradford, Union, Dixie, Suwannee, Lafayette, Columbia, and Hamilton), who receive funding to combat behavioral health issues through alcohol and drug prevention.

In 2008, the Community Coalition Alliance (CCA) was developed in response to a request from a Federal Project Officer to meet as a group and provide mentoring to one another. CCA provides a forum for partnerships, community involvement and participation, and interagency cooperation and collaboration by focusing on the issues with data-driven decision-making, evidence-based strategies, and the risk and protective factors of youth. The group is comprised of members of community coalitions, who are made up of parents, teachers, law enforcement, businesses, religious leaders, health providers and other community activists who mobilize at the local level to make their communities safer, healthier, and drug-free.

Recognized locally and nationally as a prevention coalition (consortium), CCA has an established infrastructure using the Strategic Prevention Framework (SPF) process. This 5-step process, developed by the Substance Abuse and Mental Health Services Administration (SAMHSA), provides CCA with the framework for their method of work. SPF is an on-going process of community assessment (needs and resources), capacity building, planning, implementation, and evaluation, all based on data, while considering cultural differences and sustainability. Florida began implementing the SPF process in 2004, under the Substance Abuse Response Guide (SARG) grant.

Currently, CCA is comprised of members from 16 of the 23 counties' prevention served by Lutheran Services Florida in the Northeast Region. Below are the 16 counties and the prevention coalitions representing them:

Alachua County: Alachua County Health Promotion and Wellness Coalition
https://www.facebook.com/pages/Alachua-County-Health-Promotion-and-Wellness-Coalition/397741736932781?ref=br_tf

Baker County: Baker Prevention Coalition, Inc. <http://bakercpc.blogspot.com/>

Citrus County: Partners for a Substance-Free Citrus <http://www.substancefreecitrus.org>

Clay County: Clay Action Coalition Inc. <http://clayactioncoalition.org/>

Dixie County: Dixie County Anti-Drug Coalition
<https://www.facebook.com/pages/Dixie-County-Anti-Drug-Coalition/140135282730666>

Duval County: Safe and Healthy Duval Coalition Inc. <http://www.drugfreeduval.org/>

Flagler County: Focus on Flagler <http://www.focusonflagler.org/>

Hamilton County: Hamilton County Alcohol and other Drug Prevention Coalition
<http://www.saynohamco.org/>

Hernando County: Hernando County Community Anti Drug Coalition
www.hernandoantidrug.org

Lake County: Safe Climate Coalition <http://safeclimatecoalition.org>

Levy County: Levy County Prevention Coalition www.levyprevention.org

Marion County: Marion County Children's Alliance <http://www.mcchildrensalliance.org/>

Nassau County: Nassau Alcohol Crime Drug Abatement Coalition <http://nacdac.org/>

Putnam County: Putnam County Anti Drug Coalition
<http://classsites.putnamschools.org/antidrug/Putnam.html>

St. Johns County: PACT Prevention Coalitin <http://www.pactprevention.org/>

Volusia County: One Voice for Volusia <http://www.onevoiceforvolusia.org/>

For information on the CCA, please visit the website at www.ccafl.org or contact the Board of Directors at:

Susan Woodford
Board President
Telephone: 904-277-3699
Email: elwoodford@yahoo.com

Susan Pitman
Board Vice President
Telephone: (904) 253-7701
Email: susan@drugfreedual.org OR susan@shdcfl.org

Debi MacIntyre
Board Treasurer/Secretary
Telephone: 352-408-2009
Email: debi@scclake.org

WHAT COALITIONS ARE DOING

Community anti-drug coalitions differ from Prevention Providers. Where Providers focus on prevention programming targeting a specific classroom, age group, etc., coalitions implement environmental strategies, which work to create population level change. Strategies work to change consequences that are result of substance use behaviors. Environmental strategies are typically implemented with numerous coalition partners, such as schools, law enforcement, etc. Coalitions work to recruit members from all different groups of people, agencies, etc. in the community and gain support and membership from all of Substance Abuse Mental Health Services Administration's identified 12 sectors. Strategies and activities conducted by coalitions are done in a culturally competent way, never intentionally excluding anyone in the target population based on age, race, ethnicity, culture, language, sexual orientation, disability, literacy, and gender.

Below, using guidelines provided by SAMHSA on environmental strategies, are what the CCA member coalitions are currently working on to prevent and reduce substance use in their respective communities.

Enhance Access/Reduce Barriers: Improving systems/processes to increase the ease, ability, and opportunity to utilize those systems and services (e.g., assuring transportation, housing, education, safety, and cultural sensitivity) in prevention initiatives.

	Alachua	Baker	Citrus	Clay	Dixie	Duval	Flagler	Hamilton	Hernando	Lake	Levy	Marion	Nassau	Putnam	St. Johns	Volusia
Decreased Price for Sober Rides Days						X						X				
Know the Law Campaign	X			X	X	X			X	X		X	X		X	X

Reduce Access/Enhance Barriers: Improving systems/processes to decrease the ease, ability, and opportunity for youth to access substances (e.g., raising the price of single-serve cans of alcohol, implementing retail alcohol/tobacco compliance checks).

	Alachua	Baker	Citrus	Clay	Dixie	Duval	Flagler	Hamilton	Hernando	Lake	Levy	Marion	Nassau	Putnam	St. Johns	Volusia
Compliance Checks	X	X	X	X		X		X	X	X	X		X	X	X	
Sticker Shock			X						X							
Responsible Beverage Training	X	X				X		X	X	X			X			X
Prescription Drop Off Boxes				X		X			X	X			X		X	
Prescription Take Back Days		X		X		X		X	X	X	X		X	X	X	X
In-home Lock Box Distribution									X							
Safe Festivals						X		X								

Change Consequences (Incentives/Disincentives): Increasing or decreasing the probability of a behavior by altering the consequences for performing that behavior (e.g., increasing taxes, citations, and fines; revocation/loss of driver's license).

	Alachua	Baker	Citrus	Clay	Dixie	Duval	Flagler	Hamilton	Hernando	Lake	Levy	Marion	Nassau	Putnam	St. Johns	Volusia
Party Patrols	X		X								X		X		X	X
DUI Checkpoints	X	X	X					X		X			X		X	X
Increased Enforcement for Events	X							X		X			X			X

Physical Design: Changing the physical design of the environment to reduce risk or enhance protection (e.g., re-routing foot/car traffic, adjusting park hours, alcohol/tobacco outlet density).

	Alachua	Baker	Citrus	Clay	Dixie	Duval	Flagler	Hamilton	Hernando	Lake	Levy	Marion	Nassau	Putnam	St. Johns	Volusia
Designating parking at schools										X			X			
We ID and NOTICE posters									X	X						
Tobacco Free or Drug Free Workplace		X						X	X	X		X				X
Environmental Scans	X	X	X	X	X	X	X	X	X	X	X	X	X	X	X	X
Sale restrictions near schools or parks						X		X								

Modify/Change Policies: Formal change in written procedures, by-laws, proclamations, rules, or laws (e.g., workplace initiatives, law enforcement procedures and practices, public policy actions, systems change).

X=Passed O=In progress	Alachua	Baker	Citrus	Clay	Dixie	Duval	Flagler	Hamilton	Hernando	Lake	Levy	Marion	Nassau	Putnam	St. Johns	Volusia
Tobacco Free Schools		X				X		X	O	X		X	X	X		X
Public Schools Code of Conduct (Class 3 violations: drugs and alcohol)						O										X
Civil Citations			X	X	X	O	X	O	X	X		X		X		X
Synthetic Drug Ordinance						O			X	X		X	X	X		X
Tobacco Free County Parks and Recs		X				X			X					X		
Age Restrictions for E-Cigarettes				X											O	
Restrict Sales time for alcohol an/or tobacco vendors	X							X		X			X			X
Product Placement mandates (alcohol, tobacco, and/or e-cigarettes)				X	O			X	X			X		O		
Social Host Ordinance														X		
Drug and Alcohol Free Beach																X

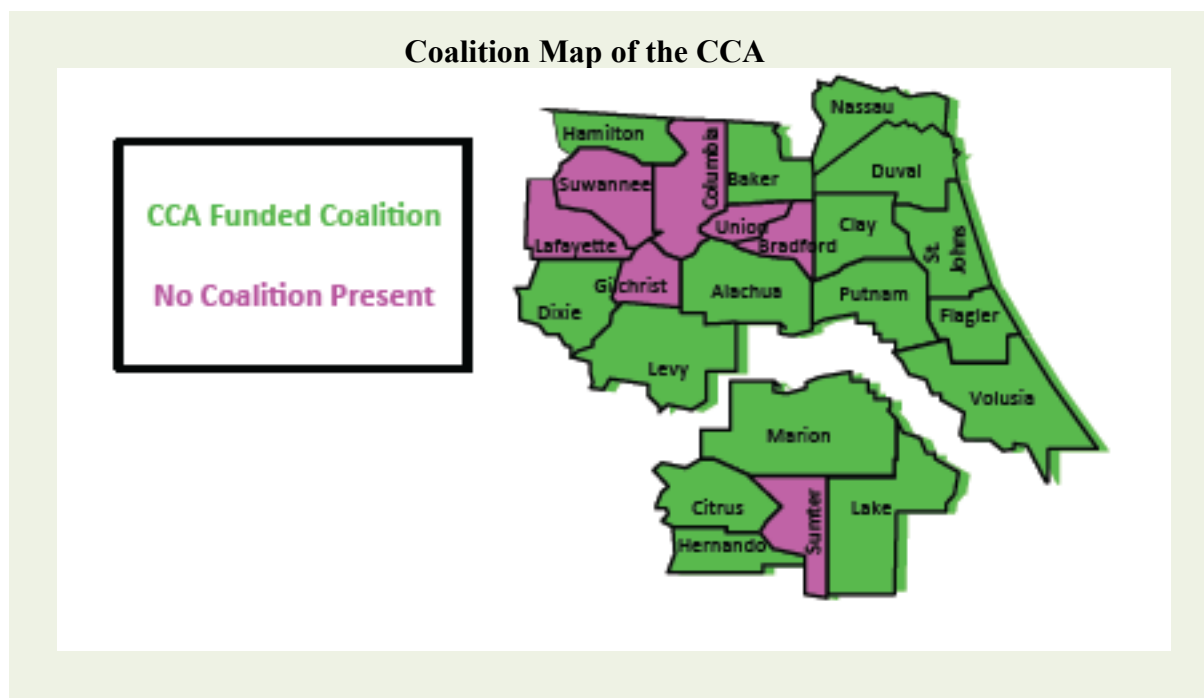
Social Marketing and Social Norming Campaigns: Campaigns that change attitudes and beliefs regarding alcohol and other drugs, as well as to disprove inaccurate perceptions. Below is a list of coalitions in the region implementing campaigns:

	Alachua	Baker	Citrus	Clay	Dixie	Duval	Flagler	Hamilton	Hernando	Lake	Levy	Marion	Nassau	Putnam	St. Johns	Volusia
Social Marketing/ Norming Campaign	X		X	X		X	X		X	X		X	X	X	X	X
Media Literacy			X			X										
Town Hall Meetings	X	X	X					X	X						X	

Youth Groups: Working with youth is also a part of coalition work. Numerous environmental strategies involve youth participation. Below is a list of youth groups that are either based at coalition headquarters or are active through a community partner:

	Alachua	Baker	Citrus	Clay	Dixie	Duval	Flagler	Hamilton	Hernando	Lake	Levy	Marion	Nassau	Putnam	St. Johns	Volusia
Coalition Youth Group							X		X				X			
SWAT Club- Students Working Against Tobacco		X	X	X	X	X	X	X	X	X	X	X	X	X	X	X
SADD Club- Students Against Destructive Decisions			X			X				X		X		X		X
MADD Club- Mother's Against Drunk Driving				X		X										

For more information on strategies identified above, visit www.ccafl.org member's page for contact information.



NEXT STEPS:

This report is a first step in a long-term regional strategic planning process. In order to define what we need to do as a region to prevent and reduce alcohol and substance use throughout the area, we first needed to identify what issues extend through the region and what is currently being done by coalitions to combat these issues.

Using the information provided in this report, the CCA is working to develop a regional logic model to understand the region's issues using the data as a guide. After completion, the CCA will develop an action plan that will include strategies to be implemented at the county level throughout the Northeast Region's counties. (Logic Model and Action Plan will be released in the spring of 2014)

It is important to note that the coalitions in the CCA are in different places in their development. Some are newly formed coalitions, whereas some have been in existence for years. The amount of strategies reflected in the charts above does not speak to one coalition being more productive than another, simply the amount of time and financial backing in their area. It is the goal of the CCA for all coalitions to maintain or become experts in the field of prevention. For instance, through the funding being provided by Lutheran Services Florida from the Florida Department of Children and Families, the CCA has been able to host trainings and provide technical assistance on the following topics throughout the first 6 months of the project period: Social Media for Coalitions, Needs Assessment/Resource and Capacity Assessments, and Strategic Prevention Framework Training.

As the regional strategic plans are determined, the CCA is confident it will be able to ensure all coalitions know and understand the proper way to implement strategies in their regions. Having well-trained and effective leaders will lead to positive outcomes.

The CCA, for purposes of the regional action plan, will use 2012 data as a baseline (starting point) to track outcomes. Coalitions have already seen reductions in their respective areas since the implementation of the SARG process in Florida and the CCA believes these reductions will only strengthen as the counties work together to create population-level change.



THE STRATEGIC PREVENTION FRAMEWORK

Assessment defines the problem or the issue that a project needs to tackle i.e., Understand a population's needs, Review the resources that are required and available.

Capacity mobilizes human, organizational, and financial resources to meet project goals. Training and education are critical.

Planning involves the creation of a comprehensive plan with goals, objectives, and strategies aimed at meeting the substance abuse prevention needs of the community.

Implementation is focused on carrying out the various components of the prevention plan, as well as identifying and overcoming any potential barriers.

Evaluation helps organizations recognize what they have done well and what areas need improvement.

www.samhsa.org

EXECUTIVE SUMMARY

In order to reduce and prevent underage drinking, alcohol abuse, and other drug use in the Northeast Region of Florida, a Needs Assessment was needed to properly understand our area's alcohol and drug problems.

A needs assessment is a systematic process for determining and addressing needs, or "gaps" between current conditions and desired conditions or "wants". According to SAMHSA's SPF, the assessment phase (Phase 1 of the 5-step process) helps define the problem or the issue that a project needs to tackle. It is an on-going strategic process that serves as the critical first step in the outcomes based planning process. This phase involves the collection of data to understand a population's needs, review the resources that are required and available and identify the readiness of the community to address prevention needs and service gaps. Developing a needs assessment for the Northeast Region will greatly assist the region's ability to support services with targeted approaches, thereby diminishing the amount of services/projects that do not produce positive outcomes. With funding scarce in the State and more specifically the region, the need to properly understand the community conditions is paramount. This Indicator Report is the first step of sharing the information gathered from the Needs Assessment.

CCA coalitions have gathered data available in the 23 county Northeast Region of Florida to develop a strategic plan to address alcohol and other drug issues. Below is a snapshot of alcohol and other drug issues identified.

KEY POINTS

Alcohol:

The most commonly used drug among both youth and adults, alcohol issues are reflected in data captured from every county in the region. In the Northeast Region, 14.8% of middle school students and 31.5% of high school students reported using alcohol in the past 30-days in 2012 and drinking rates were higher in the region than Florida Statewide averages, (2012, Florida Youth Substance Abuse Survey- FYSAS). There was an increase of alcohol-related motor vehicle crashes from 2010 to 2011 in the Northeast Region, (2011, Uniform Crime Report). In 2012, 9.2% of high school students who reported alcohol use in the past 30-days also reported drinking and driving, (2012, FYSAS). In 2012 in the Northeast Region of Florida the majority of youth reported "Another Person's Home" as their usual drinking location, followed by "My Home", (2012, FYSAS). In 2010 in the Northeast Region, 49.7% of adults reported having a drink in the past 30-days and 13.4% reported binge drinking, (2010, Behavioral Risk Factor Surveillance System).

Marijuana:

In 2012 in the Northeast Region of Florida, 5.2% of middle school students and 17.7% of high school students report using marijuana in the past 30-days, (2012, FYSAS). Only 41.9% of Northeast Florida high school students perceive a great risk or harm in using marijuana regularly and 11.3% of high school students report driving under the influence of marijuana, (2012,

FYSAS). In the 2008/09 school year there were 389 incidents involving marijuana in Northeast Florida schools, (2008/09, Florida School Indicator Report).

Tobacco:

In 2012 in the Northeast Region, 4.9% of middle school students and 14.9% of high school students reported cigarette use in the past 30-days, both higher than Florida Statewide averages, (2012, Florida Youth Tobacco Survey-FYTS). Smokeless tobacco use is also higher by youth in the Northeast Region than students statewide. 15.2% of middle school students and 15.7% of high school students reported that smoking was allowed in their home, higher than statewide averages, (2012, FYTS). In 2013 there were 4,339 tobacco retailers in the Northeast Region. 21.4% of adults were current smokers in 2010 in the Northeast, higher than the statewide average of 17.1%.

Prescription Drugs:

In 2012 in the Northeast Region, 0.8% of middle school students and 2.4% of high school students reported past 30-day depressant use. 1.8% of middle school students and 3.9% of high school students reported past 30-day prescription pain reliever use, (2012, FYSAS). There were 875 prescription drugs identified in toxicology reports in 2012 in the Northeast Region, (2012, Florida Medical Examiners Commissioner's Report). Note: More than 1 type may have been present in an individual at the time of death.

Synthetic Drugs:

Synthetic marijuana use is higher in Northeast Region high school students (7.3%), compared to the Florida Statewide average of 4.3%. In an Environmental Scan of the Northeast Region of Florida, 26 stores were identified who sold synthetic drugs, (2013, Alcohol Environmental Scan-CCA).

DATA SOURCES

Florida Youth Substance Abuse Survey (FYSAS)- The FYSAS is the statewide survey tool used to collect information on youth substance use and delinquent behaviors. The survey is completed by the Florida Department of Children and Families. Data was last released in 2012. In Hernando County, 620 middle school and 610 high school students were surveyed. Location online: <http://www.def.state.fl.us/programs/samh/publications/fysas/>

The Florida Youth Tobacco Survey (FYTS)- The FYTS tracks indicators of tobacco use and exposure to secondhand smoke among Florida public middle and high school students and provides data for monitoring and evaluating tobacco use among youth for the Florida Department of Health's Bureau of Tobacco Prevention and Control. Location Online: http://www.doh.state.fl.us/disease_ctrl/epi/Chronic_Disease/FYTS/intro.htm

Behavioral Risk Factor Surveillance System Data (BRFSS)- The BRFSS is the world's largest, on-going telephone health survey system, tracking health conditions and risk behaviors in the United States yearly since 1984. The survey is conducted by the Center for Disease Control and Prevention. Location online: <http://www.cdc.gov/brfss/>

Traffic Crash Statistics Report- A report compiled from long form traffic reports submitted by state and local law enforcement agencies to the Florida Department of Highway Safety and Motor Vehicles. Location online: <http://www.flhsmv.gov/html/safety.html>

Uniform Crime Report (UCR)- Department of Law Enforcement's UCR system allows standardized reports on crime statistics based on data gathered from across the state. Reports that provide both summary and detail information are issued semi-annually and annually. Location online: <http://www.fdle.state.fl.us/Content/getdoc/a324add7-5dd6-4201-9696-93bfd76bc36c/UCR-Home.aspx>

Florida School Indicators Report- The FSIR provides numerous indicators of school status and performance on public elementary, middle, and high schools for each of Florida's school districts. Location online: <http://www.fldoe.org/eias/eiaspubs/0809fsir.asp>

Positive Assessment Change Tool (PACT)- The PACT Assessment and Case Management System is a comprehensive assessment and case management process conducted by the Florida Department of Juvenile Justice that addresses both criminogenic needs and protective factors, from the moment a youth enters the system to the moment they exit. Location online: <http://www.djj.state.fl.us/research/delinquency-data/pact-profile>

Florida CHARTS- The County Health Profile answers the questions, *"How healthy are our residents?"* and *"What does the health status of our community look like?"* The results of the report provide your community with an understanding of the community's health status and ensure that the community's priorities consider specific health status issues, such as high diabetes death rates or low immunization rates.

Location online: <http://www.floridacharts.com/charts/Qaspecial.aspx>

Medical Examiners Commissioners Report- The Medical Examiners Commission is a joint initiative to identify unidentified deceased cases in Florida. The Florida Department of Law Enforcement and the 24 medical examiner districts work together to provide accurate data on deaths in Florida. Location online: <http://www.fdle.state.fl.us/Content/getdoc/0f1f79c0-d251-4904-97c0-2c6fd4cb3c9f/MEC-Publications-and-Forms.aspx>

Alcohol and Tobacco Licensing- The Division of Alcoholic Beverages and Tobacco licenses the alcoholic beverage and tobacco industries, collects and audits taxes and fees paid by the licensees, and enforces the laws and regulation of the alcoholic beverage and tobacco industries, pursuant to Chapter 210, Chapters 561-565 and Chapters 567-569 of Florida Statutes. Florida has approximately 75,000 active alcoholic beverage and tobacco license holders. The division generates over \$1.9 billion in license fees, taxes, fines, etc.
Location Online: <http://www.myfloridalicense.com/dbpr/abt/licenses.html>

US Census Data- Quick, easy access to facts about people, business, and geography. Quick facts are available on the city, county, and state level. Location online: <http://www.census.gov/>

Environmental Scans- Coalitions within the Northeast Region conducted an Environmental Scan of local alcohol, tobacco, and synthetic drug vendors to determine current practices regarding signage and sales.

Local Sheriff Offices: CCA coalitions worked with local law enforcement (Sheriff Offices) to capture alcohol and drug arrests for youth and adults.

AREA DESCRIPTION

According to the US Census Bureau, Florida is the fourth most populous state in the nation, and the diversity of its population creates unique challenges. The state is fairly split between males and females, and has a large youth and elder population. There is linguistic diversity with large numbers of Spanish speaking and Haitian Creole speaking populations, which tend to cluster regionally. The Northeast Region is comprised of 23 counties:

- Circuit 4: Clay, Duval and Nassau Counties
- Circuit 3: Hamilton, Suwannee, Columbia, Lafayette, and Dixie Counties
- Circuit 8: Levy, Gilchrist, Alachua, Baker, Bradford, and Union Counties
- Circuit 5: Marion, Citrus, Lake, Sumter and Hernando Counties
- Circuit 7: Volusia, Flagler, Putnam and St. John's Counties

In 2012, the population for the region was 3,600,359 residents. Basic demographic information of the regions' counties is presented in the tables below:

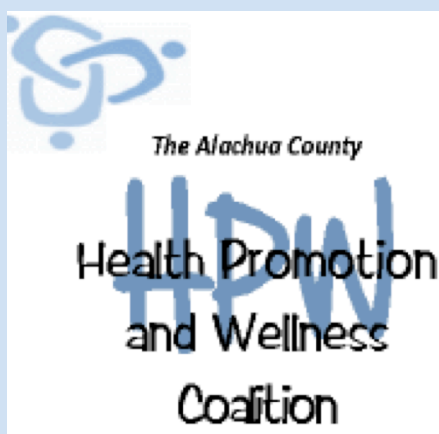
Table 1: Population Demographics for Race/Ethnicity

2012	Total Population	Hispanic	White	Black	American Indian and Eskimo	Asian	Hawaiian and Pacific Islander	Two or More Races
Alachua	251,417	8.8%	71.3%	20.3%	0.4%	5.5%	0.1%	2.5%
Baker	27,806	2.3%	84.1%	13.4%	0.3%	0.6%	0.0%	1.6%
Bradford	27,049	3.6%	78.1%	19.4%	0.3%	0.5%	0.1%	1.6%
Citrus	139,360	4.9%	93.6%	3.0%	0.4%	1.6%	0.0%	1.4%
Clay	194,345	8.4%	83.2%	10.5%	0.5%	3.1%	0.1%	2.8%
Columbia	67,966	5.2%	78.1%	18.4%	0.6%	1.1%	0.1%	1.8%
Dixie	16,126	3.7%	88.9%	8.9%	0.4%	0.4%	0.0%	1.4%
Duval	879,602	8.1%	62.5%	29.9%	0.4%	4.4%	0.1%	2.6%
Flagler	98,359	9.2%	83.9%	11.5%	0.3%	2.3%	0.1%	1.8%
Gilchrist	16,185	5.0%	91.9%	5.6%	0.6%	0.5%	0.1%	1.2%
Hamilton	14,708	9.1%	62.4%	34.3%	0.9%	0.7%	0.0%	1.7%
Hernando	172,778	10.9%	91.0%	5.5%	0.4%	1.3%	0.1%	1.7%
Lafayette	8,804	12.4%	82.4%	15.5%	0.6%	0.2%	0.0%	1.2%
Lake	303,186	13.0%	85.0%	10.5%	0.6%	2.1%	0.1%	1.7%
Levy	40,025	7.7%	87.3%	9.7%	0.6%	0.7%	0.1%	1.7%
Marion	335,125	11.4%	83.2%	13.0%	0.5%	1.5%	0.1%	1.6%
Nassau	74,629	3.6%	90.4%	6.6%	0.5%	1.0%	0.1%	1.4%
Putman	73,263	9.5%	80.4%	16.7%	0.6%	0.7%	0.1%	1.6%
St. Johns	202,188	5.7%	89.9%	5.7%	0.3%	2.3%	0.1%	1.6%
Sumter	101,620	5.8%	88.9%	9.0%	0.4%	0.7%	0.1%	0.8%
Suwannee	43,656	9.2%	83.8%	13.4%	0.8%	0.6%	0.1%	1.3%
Union	15,212	5.2%	75.3%	22.7%	0.4%	0.3%	0.0%	1.3%
Volusia	496,950	11.0%	85.0%	11.0%	0.4%	1.7%	0.1%	1.8%
NORTHEAST REGION	3,600,359	7.6%	82.6%	13.7%	0.5%	1.5%	0.1%	1.7%
Florida Overall	19,317,568	23.2%	78.3%	16.6%	0.5%	2.7%	0.1%	1.9%

Table 2: Population Demographics: Sex, Age, Language, and Income

	Female	Under 5 Years	Under 18 Years	65 and Over	Language Other than English Spoken in the Home	Median Household Income
Alachua	51.6%	5.5%	17.7%	11.5%	13.7%	\$42,818.00
Baker	47.8%	6.6%	25.4%	11.9%	2.5%	\$47,149.00
Bradford	45.7%	5.9%	20.3%	16.5%	2.9%	\$39,082.00
Citrus	51.7%	3.8%	15.3%	33.8%	6.2%	\$39,034.00
Clay	51.0%	5.7%	24.9%	13.1%	9.5%	\$59,649.00
Columbia	48.2%	6.0%	21.9%	16.3%	6.8%	\$37,534.00
Dixie	46.2%	5.8%	19.6%	20.7%	2.8%	\$35,467.00
Duval	51.5%	6.8%	23.1%	11.9%	13.1%	\$48,906.00
Flagler	52.0%	4.4%	18.8%	26.6%	15.3%	\$48,134.00
Gilchrist	47.7%	5.3%	21.1%	18.3%	4.2%	\$36,521.00
Hamilton	41.2%	5.4%	19.4%	14.6%	9.3%	\$36,875.00
Hernando	52.2%	4.6%	19.2%	26.8%	10.6%	\$41,098.00
Lafayette	39.7%	5.5%	20.5%	13.7%	9.8%	\$44,180.00
Lake	51.6%	5.2%	20.3%	25.2%	12.0%	\$45,663.00
Levy	50.6%	5.3%	20.5%	21.4%	6.8%	\$35,093.00
Marion	52.0%	5.0%	18.9%	26.8%	12.0%	\$39,770.00
Nassau	50.7%	5.2%	21.1%	18.3%	4.0%	\$57,163.00
Putman	50.6%	6.1%	22.1%	20.1%	9.0%	\$34,429.00
St. Johns	51.4%	4.9%	22.3%	17.0%	8.2%	\$64,346.00
Sumter	48.6%	2.2%	8.3%	49.3%	8.2%	\$46,981.00
Suwannee	47.6%	6.0%	21.8%	18.9%	8.1%	\$35,159.00
Union	35.2%	5.0%	19.0%	11.2%	4.1%	\$43,750.00
Volusia	51.3%	4.8%	18.4%	22.2%	12.8%	\$43,419.00
NORTHEAST REGION	48.5%	5.3%	20.0%	20.3%	8.3%	\$43,574.00
Florida Overall	51.1%	5.5%	20.7%	18.2%	27.3%	\$47,309.00

Source: US Census Bureau



Alachua County Health Promotion and Wellness Coalition- Alachua County

MISSION: To continue to successfully reduce problem behaviors including alcohol, tobacco and other drug use in Alachua County.

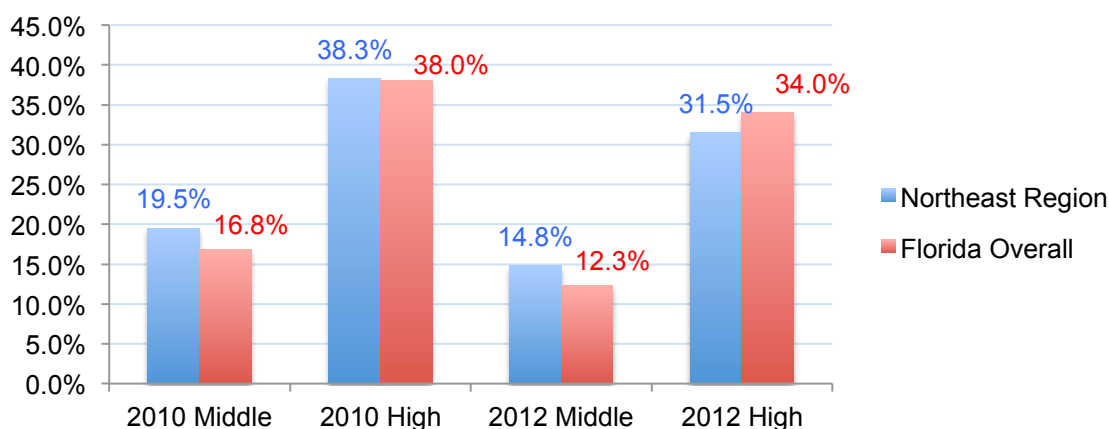
VISION: Partnerships committed to building safe, healthy and drug-free communities throughout Alachua County.

CONTACT: Danielle Tolson, Coalition Coordinator at danielle_tolson@cdsfl.org

ONLINE: https://www.facebook.com/pages/Alachua-County-Health-Promotion-and-Wellness-Coalition/397741736932781?ref=br_tf

RECENT SUBSTANCE USE

Figure 1: Past 30-day Alcohol Use by Youth



- In 2012 in the Northeast Region, recent alcohol use by youth was higher in middle schools than Florida statewide averages.

Table 3: Past 30-day Alcohol Use by Northeast Florida Youth by County

	2010 Middle	2010 High	2012 Middle	2012 High
Alachua	14.6%	37.3%	8.4%	30.3%
Baker	20.7%	42.1%	15.4%	25.8%
Bradford	26.2%	32.1%	20.1%	34.3%
Citrus	18.0%	41.3%	17.4%	38.0%
Clay	16.6%	41.3%	10.4%	35.2%
Columbia	20.1%	38.7%	14.3%	33.7%
Dixie	25.1%	46.1%	12.8%	32.3%
Duval	13.9%	36.7%	12.6%	30.2%
Flagler	16.3%	39.7%	15.2%	37.5%
Gilchrist	19.8%	41.5%	15.5%	41.6%
Hamilton	22.6%	31.2%	15.2%	27.6%
Hernando	15.8%	38.1%	12.4%	32.2%
Lafayette	21.7%	38.7%	15.4%	37.4%
Lake	19.3%	39.2%	11.2%	37.2%
Levy	39.6%	39.6%	17.0%	35.6%
Marion	18.6%	36.9%	12.2%	35.7%
Nassau	15.8%	36.3%	21.7%	35.1%
Putnam	22.5%	40.1%	17.5%	43.6%
St. Johns	13.7%	40.9%	10.4%	36.9%
Sumter	17.1%	37.7%	13.7%	36.5%
Suwannee	20.8%	36.6%	19.2%	37.1%
Union	14.2%	28.8%	18.2%	38.7%
Volusia	16.2%	39.8%	13.7%	35.3%
Northeast Region	19.5%	38.3%	14.8%	31.5%
Florida Overall	16.8%	38.0%	12.3%	34.0%

Source: Florida Youth Substance Abuse Survey

Figure 2: Past 30-day Binge Drinking Rates by Youth



- In 2012 in the Northeast Region, youth have higher rates of binge drinking compared to Florida statewide averages in both middle and high schools.

Table 4: Past 30-day Binge Drinking Rates for Northeast Florida Youth by County

	2010 Middle	2010 High	2012 Middle	2012 High
Alachua	5.1%	21.5%	2.6%	14.1%
Baker	11.1%	25.7%	7.1%	13.5%
Bradford	10.5%	18.6%	8.4%	19.1%
Citrus	9.5%	23.3%	6.6%	21.2%
Clay	6.6%	22.9%	3.4%	18.7%
Columbia	8.4%	19.2%	7.3%	18.2%
Dixie	11.3%	24.5%	3.8%	20.8%
Duval	5.9%	19.4%	6.2%	13.2%
Flagler	6.9%	20.6%	7.2%	16.9%
Gilchrist	5.6%	21.8%	6.0%	23.1%
Hamilton	8.6%	14.0%	2.8%	10.1%
Hernando	6.4%	21.5%	3.6%	15.7%
Lafayette	8.2%	25.6%	5.8%	24.4%
Lake	8.6%	18.7%	3.5%	17.0%
Levy	8.6%	24.6%	8.2%	19.1%
Marion	9.2%	18.8%	5.2%	15.6%
Nassau	6.6%	20.3%	7.2%	18.2%
Putnam	12.6%	21.3%	9.2%	26.9%
St. Johns	4.4%	23.2%	3.6%	18.3%
Sumter	6.7%	21.2%	6.6%	18.1%
Suwannee	11.1%	20.0%	8.3%	20.5%
Union	4.4%	17.2%	8.3%	23.7%
Volusia	8.1%	21.4%	4.8%	15.7%
Northeast Region	8.0%	21.1%	5.9%	18.4%
Florida Overall	6.9%	19.6%	4.7%	16.4%

Source: Florida Youth Substance Abuse Survey

Table 5: Adult Alcohol Use Rates- 2010

	Northeast Region	Florida Overall
1 drink in past 30 days	49.7%	55.3%
Heavy drinkers (adult men having more than two drinks per day and adult women having more than one drink per day)	5.0%	5.2%
Binge drinkers (males having five or more drinks on one occasion, females having four or more drinks on one occasion)	13.4%	13.7%

- In the Northeast Region of Florida in 2010, fewer adults reported alcohol use compared to Florida Statewide averages.

Source: Behavioral Risk Factor Surveillance System Data

Note: Northeast Region includes all surveyed areas of the 23 counties- not all areas were surveyed.

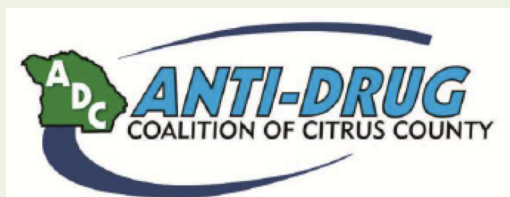
Baker Prevention Coalition, Inc. - Baker County

MISSION: Baker Prevention Coalition, Inc. seeks to educate and communicate with the general public, community organizations, and community-serving organizations that work with youth, to eliminate drugs, tobacco, and alcohol use and at the same time reduce associated criminal behaviors.

CONTACT: Tracie Sides, Executive Director at t_sides@bellsouth.net

ONLINE: <https://www.facebook.com/bakercountypep>
<http://bakercpc.blogspot.com/>

Partners for a Substance-Free Citrus- Citrus County

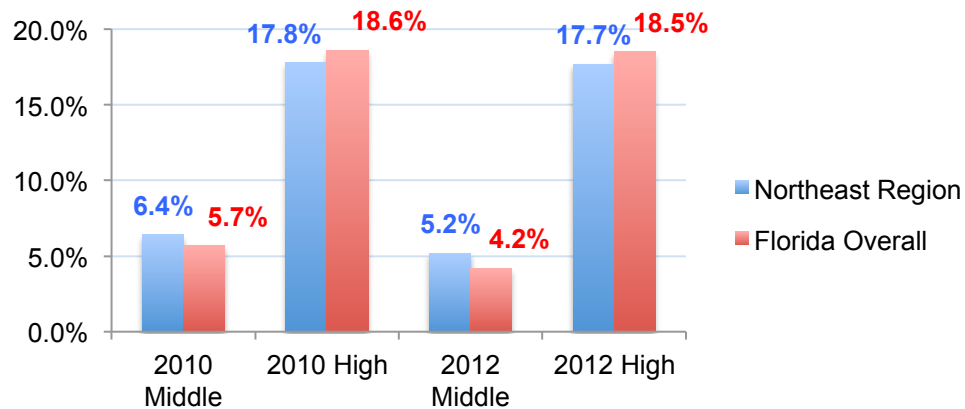


MISSION: The mission of the Anti-Drug Coalition of Citrus County, Inc. is to prevent substance abuse among youth and adults through community-based partnerships.

CONTACT: Renna S. Jablonskis, Executive Director of Finance at renna@antidrugcitrus.com

ONLINE: <http://www.substancefreecitrus.org/>

Figure 3: Past 30-day Marijuana Use by Youth



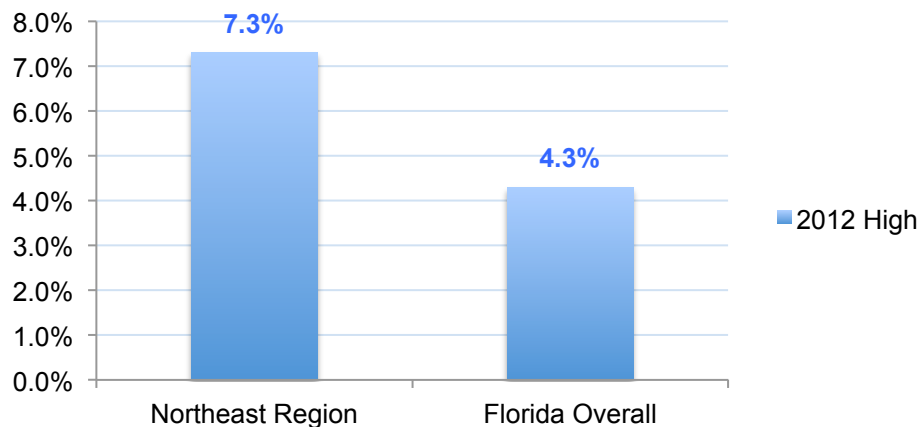
- In 2012 in the Northeast Region, recent marijuana use was higher among middle school students compared to Florida Statewide averages.

Table 6: Past 30-day Marijuana Use for Northeast Florida Youth by County

	2010 Middle	2010 High	2012 Middle	2012 High
Alachua	4.10%	23.4%	3.9%	16.2%
Baker	5.9%	18.3%	5.0%	11.0%
Bradford	5.2%	14.9%	6.2%	17.7%
Citrus	9.0%	16.4%	7.0%	19.3%
Clay	4.8%	21.3%	4.8%	19.8%
Columbia	7.2%	18.5%	6.5%	14.7%
Dixie	5.2%	16.5%	3.6%	10.5%
Duval	5.9%	20.5%	5.1%	16.5%
Flagler	7.0%	21.7%	6.5%	21.9%
Gilchrist	6.7%	17.6%	6.2%	19.9%
Hamilton	5.8%	13.9%	3.2%	13.1%
Hernando	6.8%	22.2%	4.5%	19.2%
Lafayette	3.7%	7.3%	4.0%	14.1%
Lake	6.8%	18.1%	4.6%	22.1%
Levy	6.9%	17.3%	4.6%	17.4%
Marion	6.8%	15.2%	4.7%	17.7%
Nassau	5.2%	17.3%	5.0%	18.2%
Putnam	13.0%	20.2%	7.6%	27.4%
St. Johns	4.9%	21.8%	3.0%	19.4%
Sumter	3.0%	14.4%	3.3%	14.6%
Suwannee	9.5%	18.0%	7.2%	18.4%
Union	5.6%	13.2%	7.2%	17.8%
Volusia	7.1%	21.8%	4.8%	20.3%
Northeast Region	6.4%	17.8%	5.2%	17.7%
Florida Overall	5.7%	18.6%	4.2%	18.5%

Source: Florida Youth Substance Abuse Survey

Figure 4: Past 30-day Synthetic Marijuana Use by High School Students



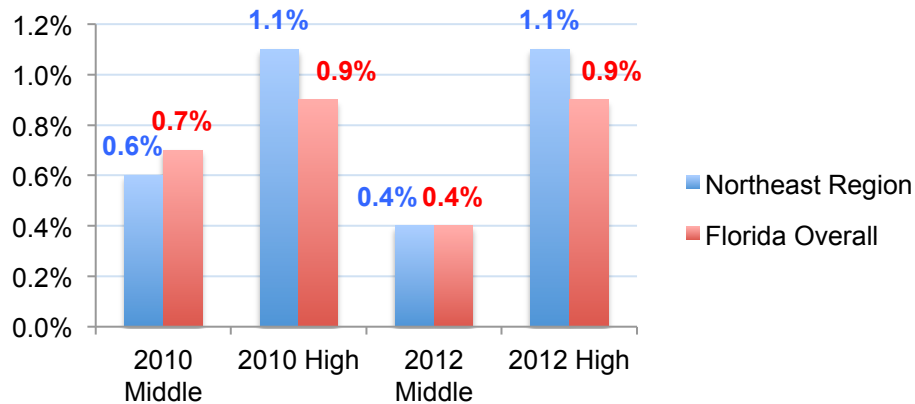
- In 2012 in the Northeast Region, recent synthetic drug use was higher among high school students compared to Florida Statewide averages.

Table 7: Past 30-day Synthetic Marijuana Use by Northeast Florida High School Students by County

	2012 High
Alachua	2.6%
Baker	3.6%
Bradford	5.3%
Citrus	10.9%
Clay	4.3%
Columbia	5.6%
Dixie	8.0%
Duval	3.1%
Flagler	9.7%
Gilchrist	7.7%
Hamilton	10.7%
Hernando	7.6%
Lafayette	5.9%
Lake	5.8%
Levy	9.1%
Marion	7.7%
Nassau	4.8%
Putnam	8.8%
St. Johns	3.5%
Sumter	4.2%
Suwannee	30.0%
Union	3.5%
Volusia	5.3%
Northeast Region	7.3%
Florida Overall	4.3%

Source: Florida Youth Substance Abuse Survey

Figure 5: Past 30-day Cocaine Use by Youth



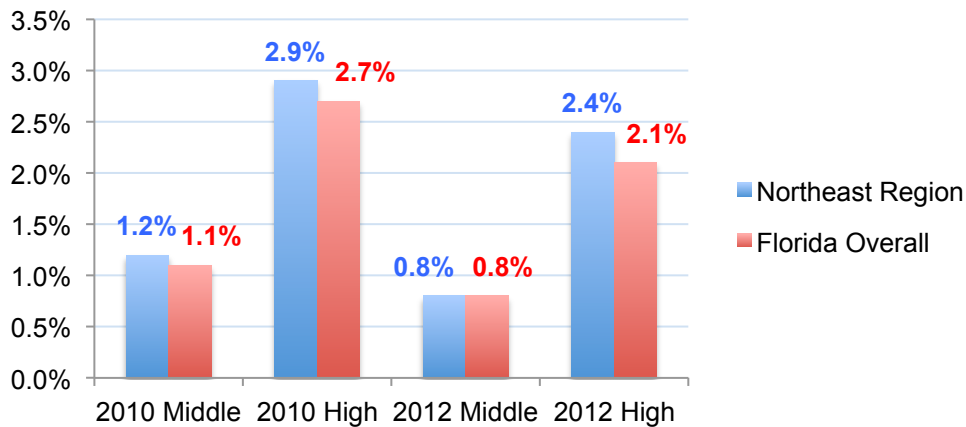
- In 2012 in the Northeast Region, recent cocaine use was higher among high school students than Florida Statewide averages.

Table 8: Past 30-day Cocaine Use for Northeast Florida Youth by County

	2010 Middle	2010 High	2012 Middle	2012 High
Alachua	0.6%	0.6%	0.0%	0.4%
Baker	0.8%	0.2%	0.2%	0.6%
Bradford	1.1%	1.2%	0.0%	0.0%
Citrus	0.3%	0.7%	0.0%	1.7%
Clay	1.1%	0.8%	0.4%	0.8%
Columbia	0.2%	1.8%	0.6%	0.8%
Dixie	0.0%	0.9%	0.4%	0.5%
Duval	0.5%	1.0%	0.3%	0.8%
Flagler	0.8%	0.8%	1.7%	0.4%
Gilchrist	0.0%	0.8%	0.7%	1.7%
Hamilton	0.0%	2.5%	0.0%	1.3%
Hernando	0.5%	1.1%	0.1%	0.5%
Lafayette	1.0%	2.6%	0.0%	0.0%
Lake	0.7%	0.3%	0.2%	1.2%
Levy	0.5%	2.2%	0.5%	1.4%
Marion	1.4%	0.6%	0.2%	0.5%
Nassau	0.0%	0.8%	0.1%	0.9%
Putnam	0.7%	1.1%	0.8%	5.9%
St. Johns	0.6%	1.3%	0.5%	0.9%
Sumter	0.5%	0.9%	0.4%	0.8%
Suwannee	0.5%	1.0%	0.2%	1.6%
Union	0.5%	0.0%	0.3%	2.2%
Volusia	0.9%	1.0%	1.0%	0.7%
Northeast Region	0.6%	1.1%	0.4%	1.1%
Florida Overall	0.7%	0.9%	0.4%	0.9%

Source: Florida Youth Substance Abuse Survey

Figure 6: Past 30-day Depressant Use by Youth



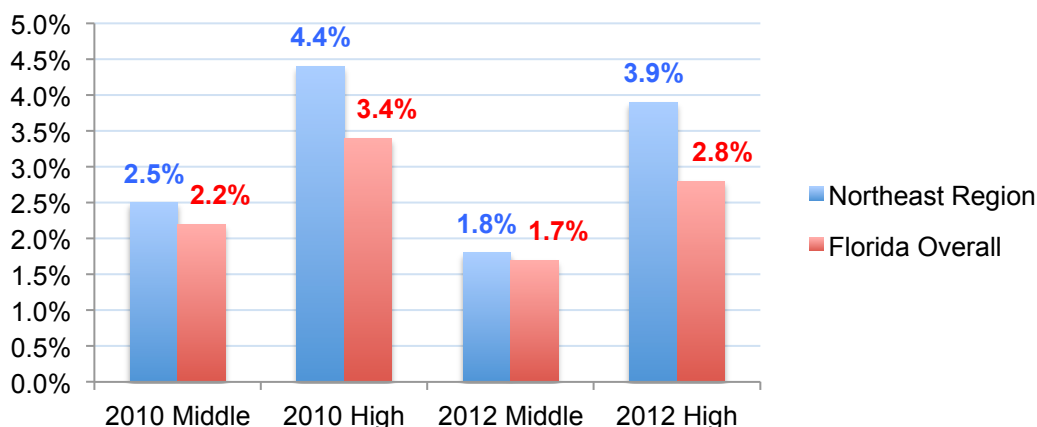
- In 2012 in the Northeast Region, recent depressant use was higher in high schools compared to Florida Statewide averages.

Table 9: Past 30-day Depressant Use by Youth

	2010 Middle	2010 High	2012 Middle	2012 High
Alachua	0.5%	3.1%	1.0%	2.1%
Baker	1.4%	3.8%	0.3%	3.2%
Bradford	1.6%	3.9%	1.0%	1.0%
Citrus	2.3%	3.6%	1.1%	2.9%
Clay	1.9%	3.3%	0.5%	2.5%
Columbia	1.3%	3.0%	0.8%	3.4%
Dixie	0.7%	1.1%	0.0%	1.6%
Duval	0.9%	2.3%	0.7%	2.1%
Flagler	1.8%	3.4%	0.9%	2.5%
Gilchrist	0.5%	1.6%	0.7%	2.8%
Hamilton	1.2%	1.3%	0.9%	0.7%
Hernando	0.9%	2.2%	0.3%	1.7%
Lafayette	2.0%	4.3%	1.1%	3.6%
Lake	1.5%	3.1%	0.4%	1.7%
Levy	1.3%	3.2%	0.9%	2.3%
Marion	1.3%	2.7%	0.6%	1.7%
Nassau	0.6%	1.9%	0.4%	2.3%
Putnam	1.4%	3.2%	1.4%	3.6%
St. Johns	0.9%	3.1%	0.9%	4.2%
Sumter	1.6%	2.9%	1.5%	1.8%
Suwannee	1.2%	2.0%	2.1%	1.6%
Union	0.5%	3.4%	1.6%	3.2%
Volusia	1.4%	4.3%	0.3%	2.5%
Northeast Region	1.2%	2.9%	0.8%	2.4%
Florida Overall	1.1%	2.7%	0.8%	2.1%

Source: Florida Youth Substance Abuse Survey

Figure 7: Past 30-day Prescription Pain Reliever Use by Youth



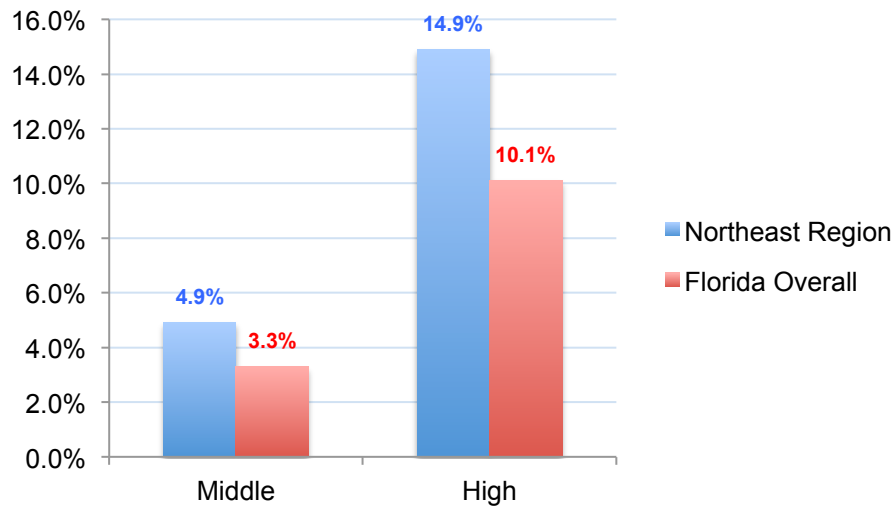
- In 2012 in the Northeast Region, recent prescription pain reliever use was higher by middle and high school students compared to Florida Statewide averages.

Table 10: Past 30-day Prescription Pain Reliever Use by Youth

	2010 Middle	2010 High	2012 Middle	2012 High
Alachua	1.7%	4.0%	1.6%	2.2%
Baker	1.1%	4.5%	1.4%	2.8%
Bradford	1.5%	4.0%	1.8%	4.3%
Citrus	4.7%	5.0%	1.9%	5.1%
Clay	2.6%	4.1%	1.1%	3.3%
Columbia	1.8%	5.0%	2.1%	4.9%
Dixie	4.1%	3.3%	0.8%	1.1%
Duval	2.3%	4.0%	2.1%	3.7%
Flagler	2.0%	4.2%	2.3%	5.3%
Gilchrist	1.8%	3.3%	2.0%	4.6%
Hamilton	2.7%	3.5%	2.1%	5.5%
Hernando	2.8%	3.3%	1.5%	2.3%
Lafayette	1.9%	2.6%	2.3%	5.9%
Lake	3.5%	3.8%	2.2%	3.7%
Levy	2.8%	6.0%	1.0%	3.9%
Marion	3.1%	3.9%	2.2%	2.8%
Nassau	2.9%	3.8%	2.3%	2.3%
Putnam	4.0%	5.3%	2.8%	5.9%
St. Johns	1.2%	4.6%	1.1%	4.1%
Sumter	1.9%	5.9%	2.0%	3.8%
Suwannee	3.4%	5.0%	2.3%	2.8%
Union	1.5%	5.5%	2.2%	6.4%
Volusia	2.9%	5.6%	1.1%	2.6%
Northeast Region	2.5%	4.4%	1.8%	3.9%
Florida Overall	2.2%	3.4%	1.7%	2.8%

Source: Florida Youth Substance Abuse Survey

Figure 8: Past 30-day Cigarette Use by Youth- 2012



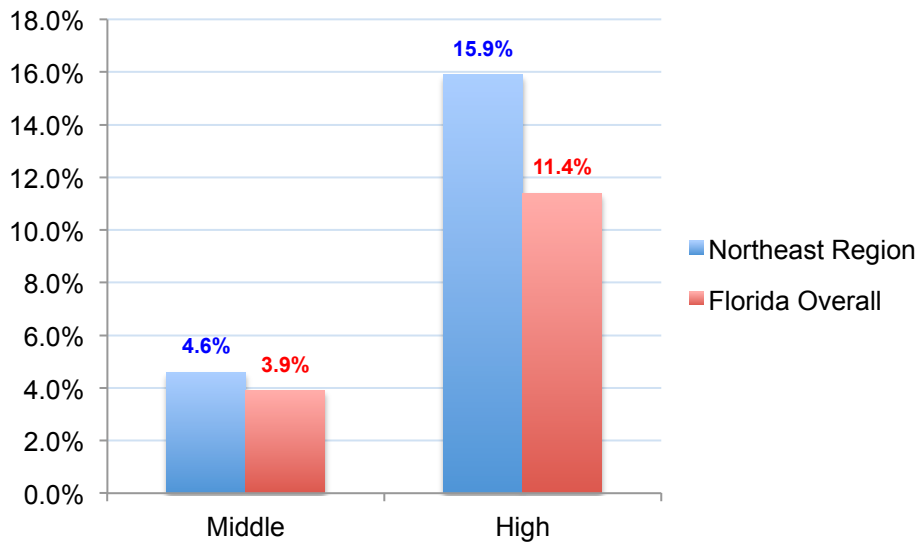
- In 2012 in the Northeast region, youth cigarette use was higher by both middle and high school students compared to Florida Statewide averages.

Table 11: Past 30-day Cigarette Use by Youth by County- 2012

	2012 Middle	2012 High
Alachua	1.9%	9.9%
Baker	5.5%	15.4%
Bradford	6.0%	12.9%
Citrus	6.7%	17.8%
Clay	3.2%	12.7%
Columbia	5.2%	12.8%
Dixie	4.2%	15.8%
Duval	2.8%	8.1%
Flagler	Data not located	
Gilchrist	6.3%	20.7%
Hamilton	4.3%	14.5%
Hernando	3.5%	15.8%
Lafayette	5.6%	19.4%
Lake	4.3%	14.4%
Levy	5.1%	18.8%
Marion	3.2%	14.8%
Nassau	3.0%	9.7%
Putnam	5.9%	15.1%
St. Johns	3.1%	12.1%
Sumter	6.5%	19.0%
Suwannee	5.4%	15.5%
Union	10.4%	21.0%
Volusia	5.0%	12.6%
Northeast Region	4.9%	14.9%
Florida Overall	3.3%	10.1%

Source: Florida Youth Tobacco Survey

Figure 9: Past 30-day Cigar Use by Youth- 2012

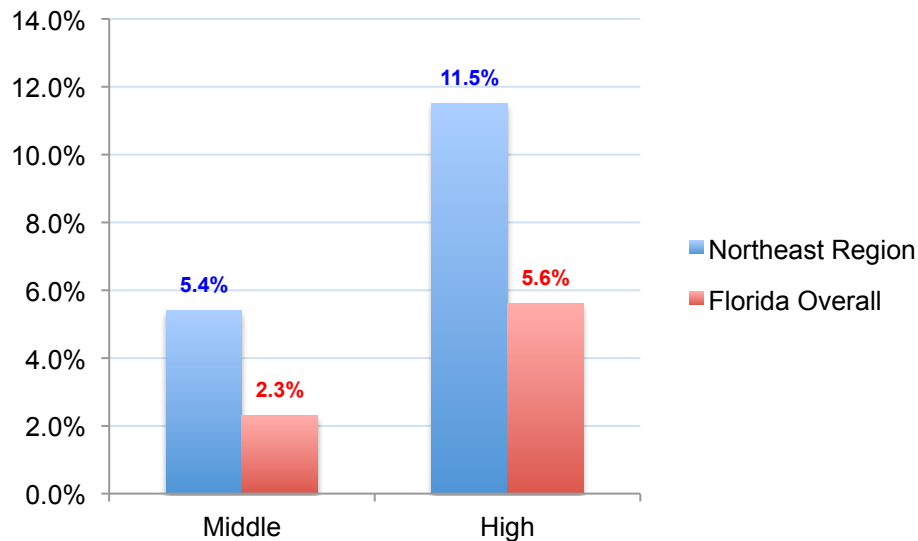


- In 2012 in the Northeast region, youth cigar use was higher by both middle and high school students compared to Florida Statewide averages.

Source: Florida Youth Tobacco Survey

Note: Flagler County data not included

Figure 10: Past 30-day Smokeless Use by Youth- 2012

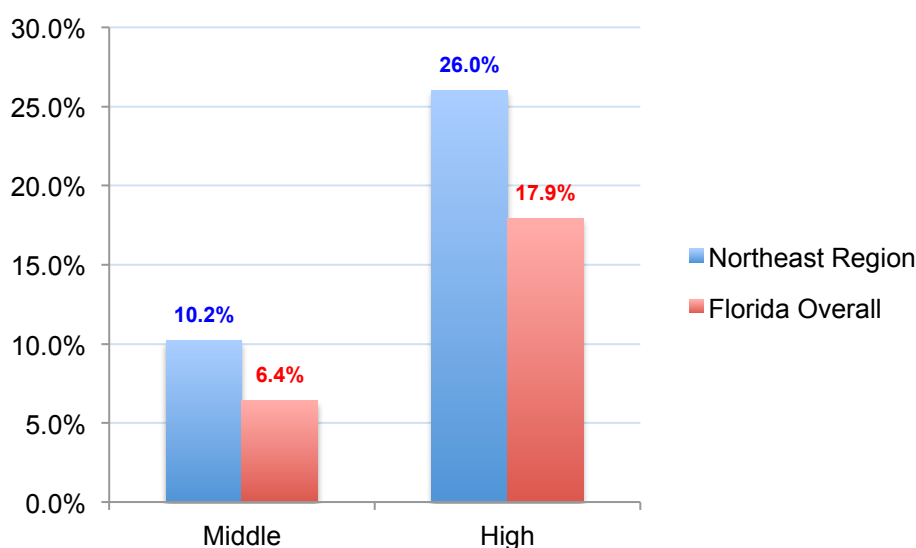


- In 2012 in the Northeast region, youth smokeless tobacco use was higher by both middle and high school students compared to Florida Statewide averages.

Source: Florida Youth Tobacco Survey

Note: Flagler County data not included

Figure 11: Past 30-day Any Tobacco Use by Youth- 2012



- In 2012 in the Northeast region, youth tobacco use was higher by both middle and high school students compared to Florida Statewide averages.

Source: Florida Youth Tobacco Survey

Note: Flagler County data not included

Table 12: Adult Current Smokers

	Northeast Region	Florida
Adults who are current smokers	21.4%	17.1%

- In the Northeast Region of Florida in 2010, fewer adults reported being current smokers compared to Florida Statewide averages.

Source: Behavioral Risk Factor Surveillance System Data

Note: Northeast Region includes all surveyed areas of the 23 counties- not all areas were surveyed.

Clay Action Coalition- Clay County

MISSION: To promote and enhance community safety, health, education and development by utilizing people, ideas, and resources in the prevention of youth substance abuse.

VISION: Safe, Healthy and Drug Free Communities for All.

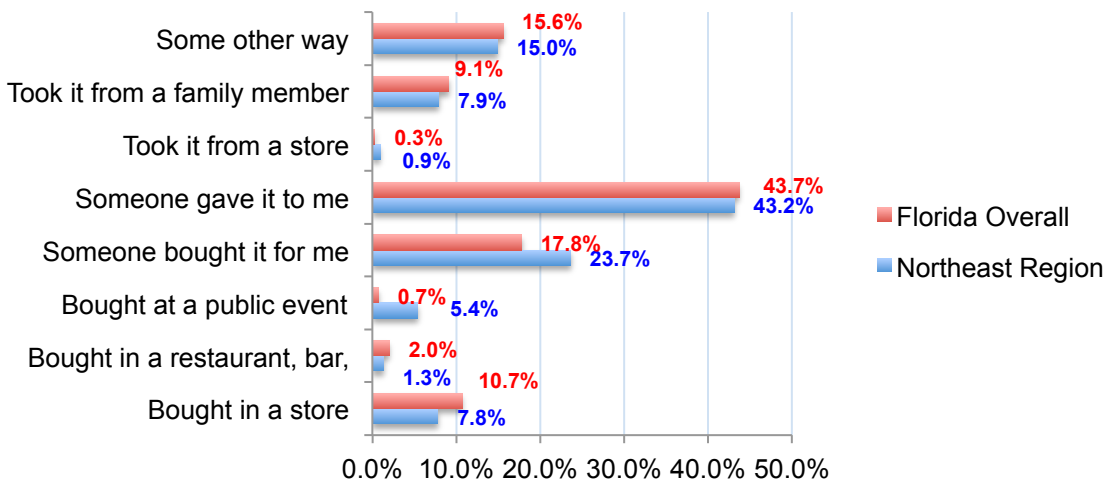
CONTACT: Stephanie Geoghagan, Project Coordinator at Stephanie.geoghagan@ccbhc.org

ONLINE: <http://www.clayactioncoalition.org/>
<https://www.facebook.com/pages/Clay-Action-Coalition/385205754890264>



SUBSTANCE USE BEHAVIORS AND ATTITUDES

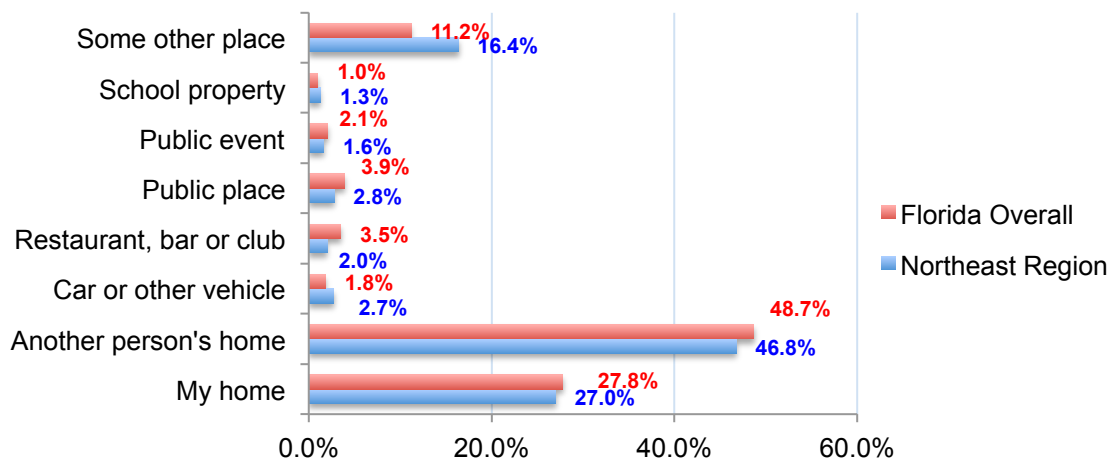
Figure 12: Youth Usual Source of Alcohol for Youth Who Drank in Past-30 Days



- In 2012, the majority of Northeast Region youth report gaining access to alcohol by “Someone Gave it to Me”.
- Northeast Region youth report significantly higher rates of gaining access to alcohol at public events compared to youth statewide, as well as someone buying alcohol for them.

Source: Florida Youth Substance Abuse Survey

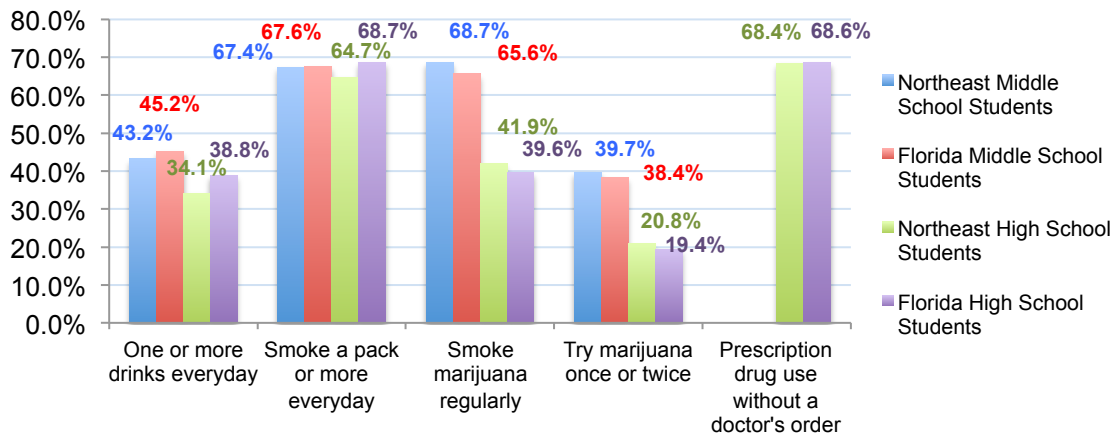
Figure 13: Youth Usual Drinking Location for Youth Who Drank in Past-30 Days



- In 2012 in the Northeast Region of Florida the majority of youth reported “Another Person’s Home” as their usual drinking location, followed by “My Home”.

Source: Florida Youth Substance Abuse Survey

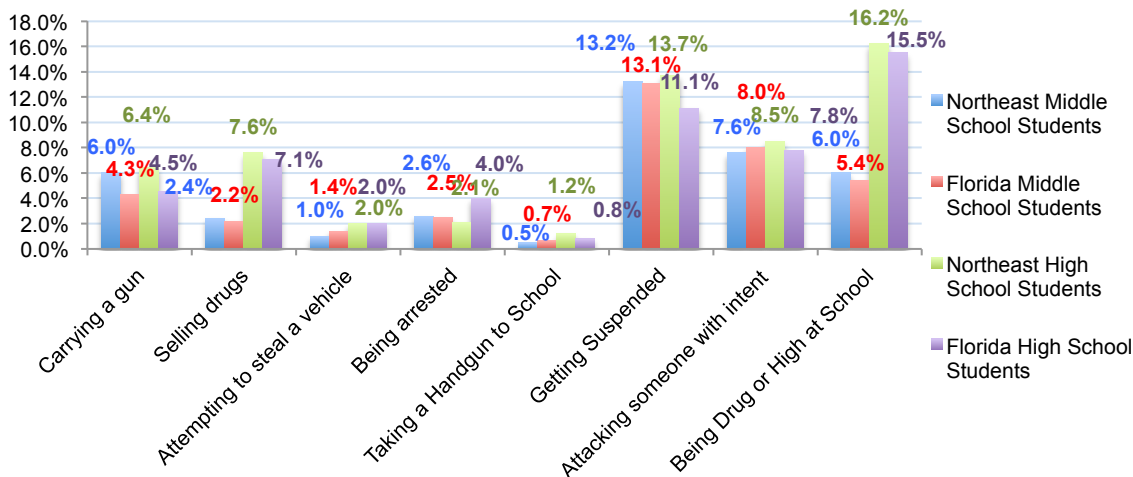
Figure 14: Amount of Students who Perceive a Great Risk or Harm of Substance Use



- In 2012 in the Northeast Region, middle school students perceive less of a risk of someone their age drinking alcohol and smoking a pack of cigarettes a day than middle school students statewide.
- In 2012 in the Northeast Region, high school students perceive less of a risk of someone their age drinking alcohol, smoking a pack of cigarettes a day and using a prescription drug without doctors orders than high school students statewide.

Source: Florida Youth Substance Abuse Survey

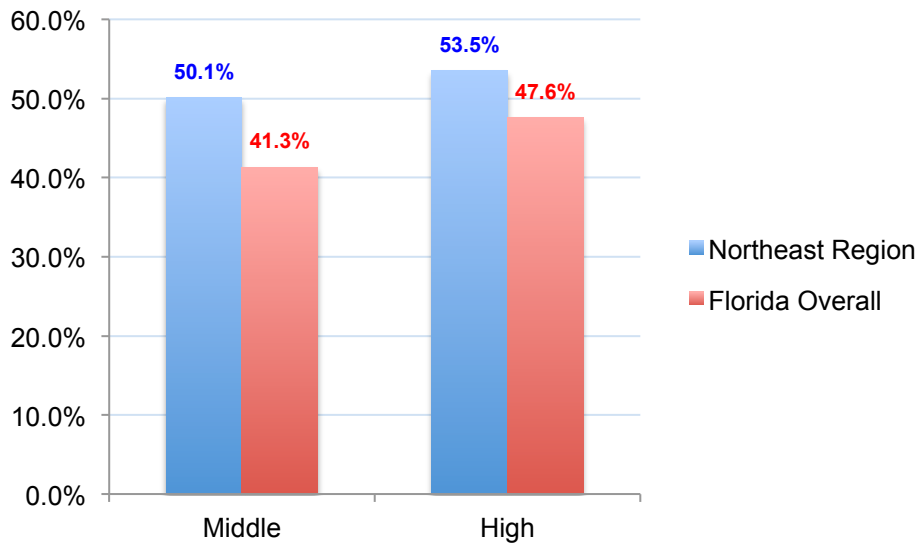
Figure 15: Percentages of Northeast Region Youth and Florida Statewide Youth who Reported Engaging in Delinquent Behavior within the Past 12 Months- 2012



- In 2012 in the Northeast Region, middle and high school students report higher rates of being drunk or high at school compared to Florida Statewide averages.

Source: Florida Youth Substance Abuse Survey

Figure 16: Amount of Youth Exposed to Secondhand Smoke in the Past 7 Days- 2012

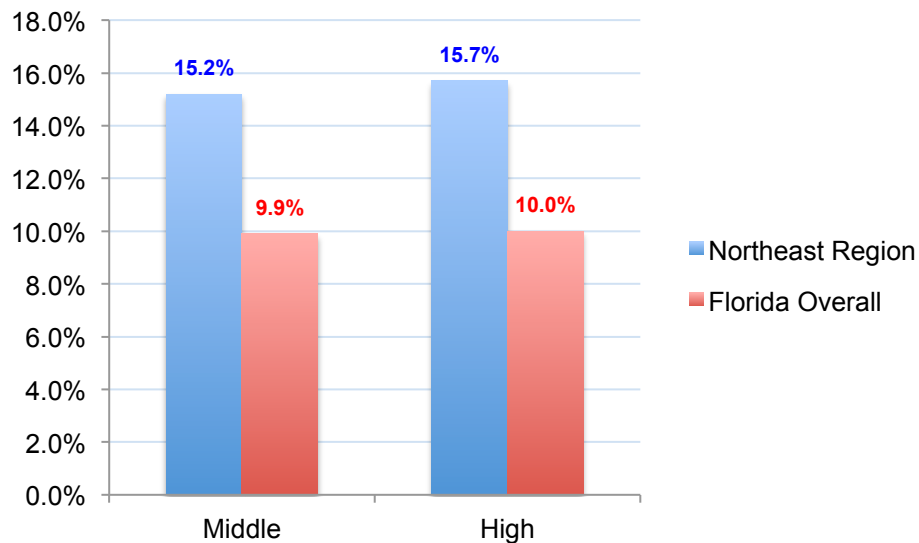


- In 2012 in Northeast Florida, more middle and high school students were exposed to secondhand smoke in the past week compared to Florida Statewide averages.

Source: Florida Youth Tobacco Survey

Note: Flagler County data not included

Figure 17: Smoking is Allowed in the Home- 2012

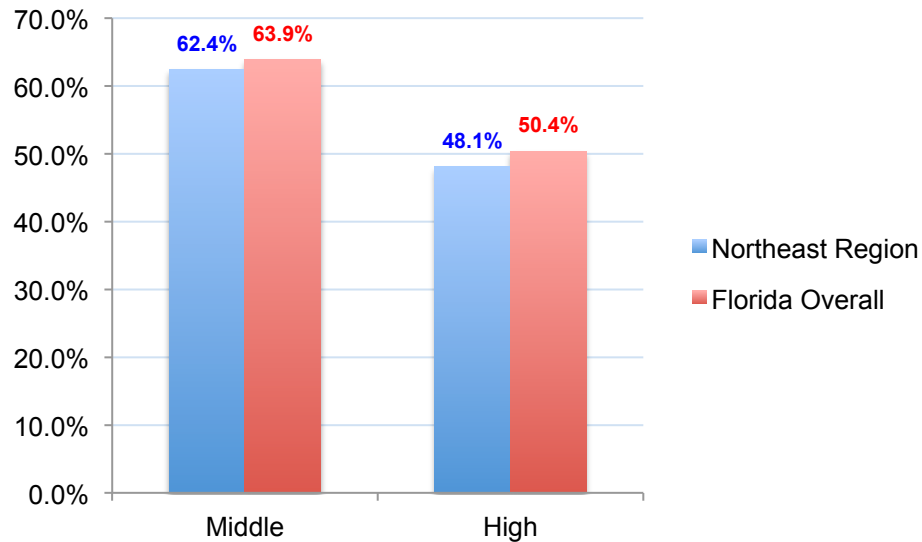


- In 2012 in Northeast Florida, more middle and high school students reside in homes where smoking is allowed compared to Florida Statewide averages.

Source: Florida Youth Tobacco Survey

Note: Flagler County data not included

Figure 18: Parents have Talked About Tobacco in the Past Year- 2012



- In 2012 in Northeast Florida, less middle and high school student's parents talked to youth about the dangers of tobacco compared to Florida Statewide averages.

Source: Florida Youth Tobacco Survey

Note: Flagler County data not included



Dixie County Anti Drug Coalition- Dixie County

MISSION: Promote and develop a more positive and safe environment for the Dixie County youth, as well as young adults and adults, by educating on the dangers of alcohol and other drugs and by uniting people and services to assist in the prevention effort.

VISION: An innovated and empowered community with resources to promote wellbeing.

CONTACT: Katrina VanAernam, Coalition Director at kvanaernam@gmail.com

ONLINE: <https://www.facebook.com/pages/Dixie-County-Anti-Drug-Coalition/140135282730666>



ONLINE: www.drugfreeduval.org

Facebook:

www.facebook.com/drugfreeduval

Twitter: @drugfreeduval

LinkedIn: <http://linkd.in/1g17mtY>

Drug Free Duval (Safe and Healthy Duval Coalition)- Duval County

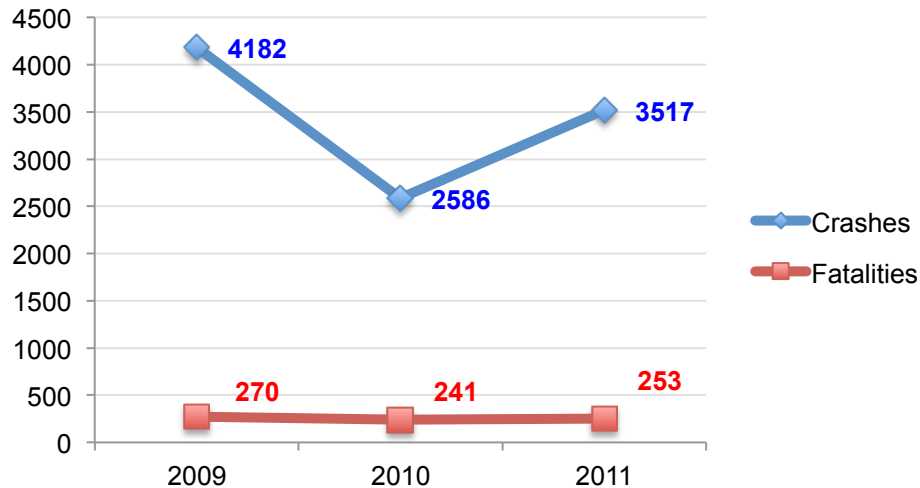
MISSION: To promote a culture free of alcohol and substance abuse among youth and adults.

VISION: Freedom from alcohol and substance abuse for all residents of Duval County.

CONTACT: Susan Pitman, Project Director at susan@drugfreeduval.org

IMPAIRED DRIVING DATA

Figure 19: Amount of Alcohol Crashes and Fatal Crashes in Northeast Florida



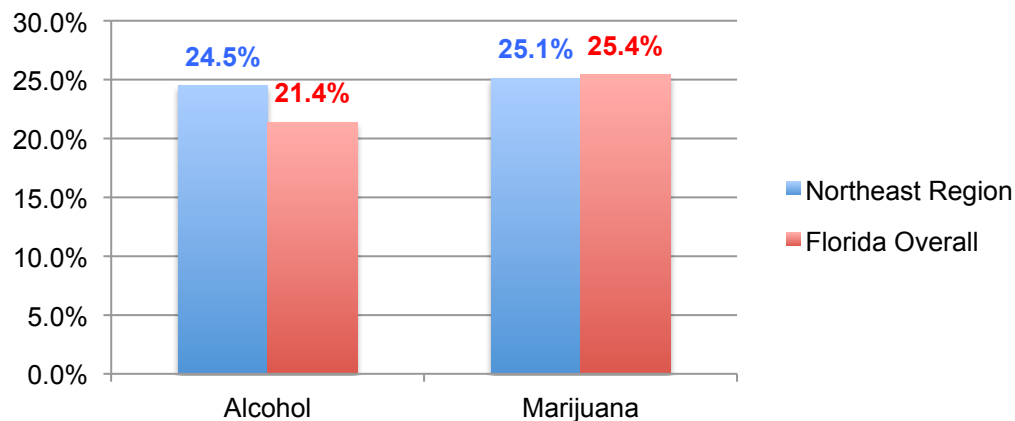
- There was an increase of alcohol-related motor vehicle crashes from 2010 to 2011 in the Northeast Region of Florida.

Source: Florida Department of Highway Safety and Motor Vehicles

Table 13: DUI Arrests in the Northeast Region of Florida

	2010	2011	2012
DUI Arrests	10,150	8,095	8,870

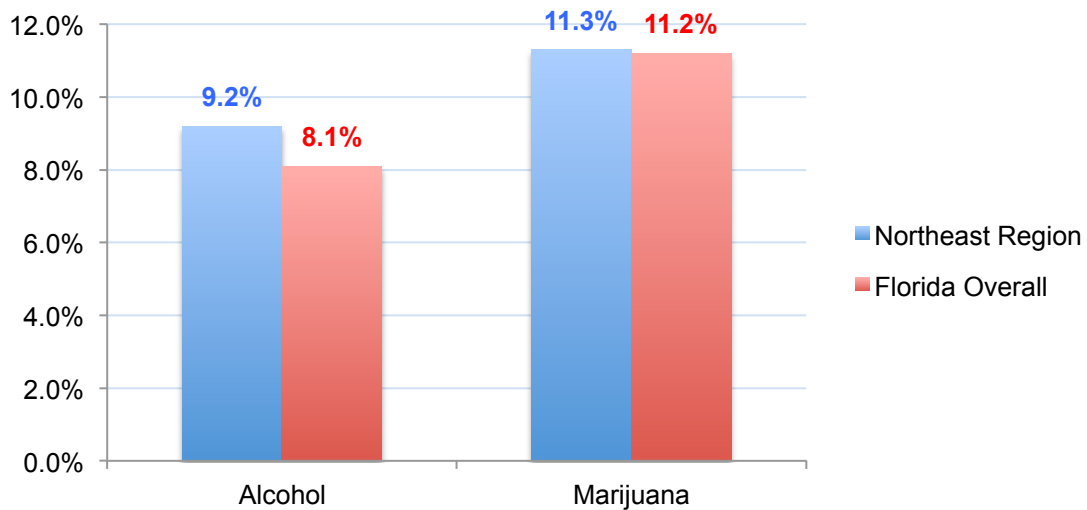
Figure 20: Amount of High School Students who Report Riding in a Vehicle within the Past 30-Days Driven by Someone who had been Drinking Alcohol or Using Marijuana- 2012



- In 2012 in the Northeast Region, more high school students report riding in a car with someone who had been drinking compared to Florida Statewide averages.

Source: Florida Youth Substance Abuse Survey

Figure 21: Amount of High School Students who Reported Driving a Vehicle within the Past 30-Days after Drinking Alcohol or Using Marijuana- 2012



- In 2012 in the Northeast Region, more high school students report drinking and driving compared to Florida Statewide averages.

Source: Florida Youth Substance Abuse Survey



Focus on Flagler Coalition- Flagler County

MISSION: Collaborating with concerned partners and citizens of Flagler who provide services that promote and strengthen youth, families and community to achieve healthy and fulfilling lives.

CONTACT: Debbie Neuman at debbieneuman56@gmail.com

ONLINE: <http://www.focusonflagler.org/>

Hamilton County Alcohol and other Drug Prevention Coalition- Hamilton County

MISSION: The specific and primary purpose of the coalition is for the charitable purpose of reducing substance abuse among youth, and overtime, among adults by addressing risk factors in a community that serve to increase the risk of substance abuse and promoting the protective factors that serve to minimize the risk of substance abuse. Further, the development of the partnership via collaboration at the federal, state, and local levels will help achieve this goal.

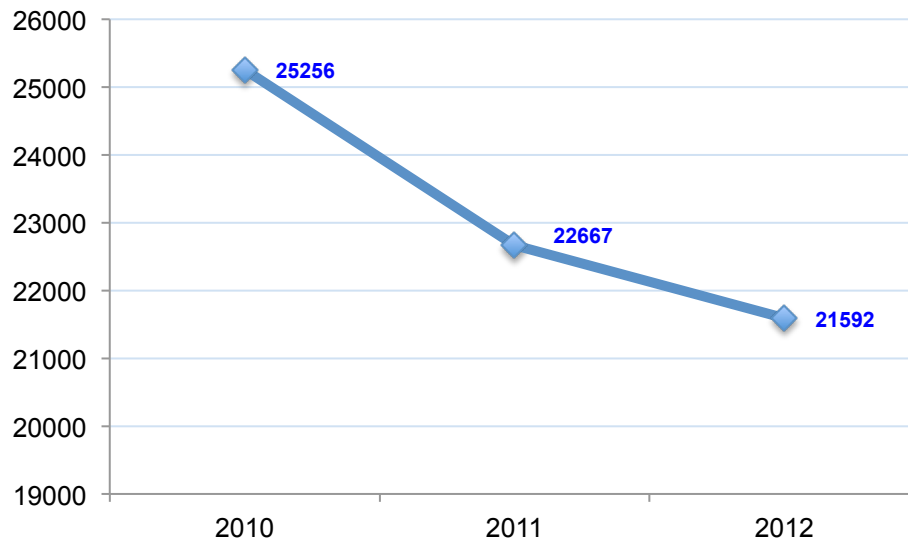
VISION: "Saving Lives Through Prevention"



CONTACT: Grace McDonald,
Executive Director at
mcdonalgdg1@windstream.net

CRIME DATA

Figure 22: Drug/Narcotic Arrests in the Northeast Region of Florida



- From 2011 to 2012 in the Northeast Region, the amount of drug/narcotic arrests decreased by 4.7%.

Source: Uniform Crime Report

Table 14: Youth Alcohol and Drug Arrest Data from County Sheriffs' Offices-2012

	Youth Alcohol Arrests	Youth Drug Arrests
Baker	1	12
Bradford	0	9
Citrus	0	233
Clay	8	96
Dixie	0	3
Duval	33	295
Hamilton	1	0
Hernando	9	54
Lake	14	135
Levy	1	7
Marion	33	0
Nassau	4	24
Putnam	4	30
Volusia	26	131

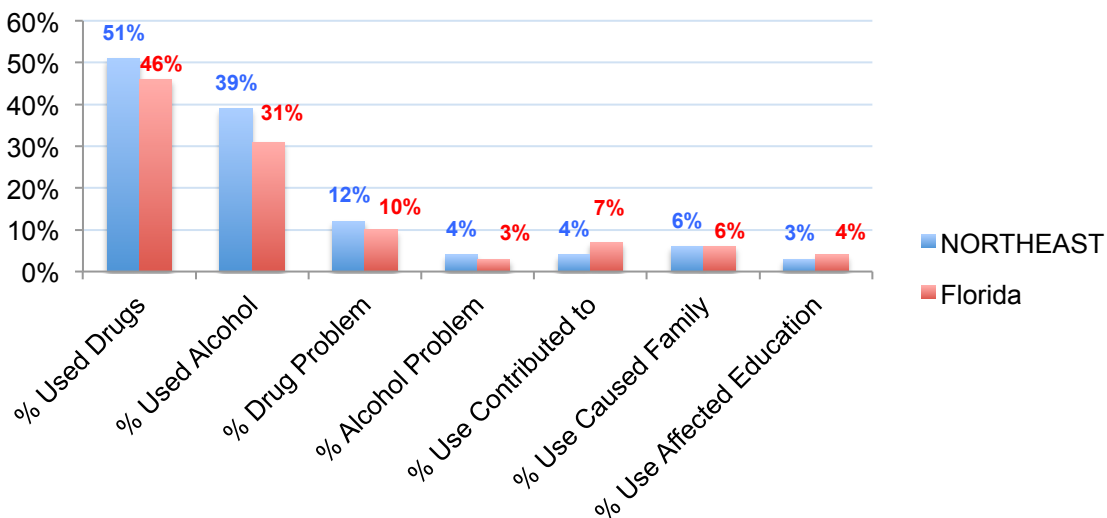
Source: Local Sheriff Offices

Table 15: Adult Alcohol and Drug Arrest Data from County Sheriffs' Offices- 2012

	Adult Alcohol Arrests	Adult Drug Arrests
Baker	147	74
Bradford	21	98
Clay	371	1,027
Dixie	14	60
Duval	4,261	5,335
Hamilton	29	62
Hernando	244	603
Lake	337	1,183
Levy	28	140
Marion	375	880
Nassau	466	419
Suwannee	86	220
Union	24	49
Volusia	2,513	4,851

Source: Local Sheriff Offices

Figure 23: Percentage of Youth Who Report Alcohol and Other Drug Use at Time of Arrest- 2011/2012

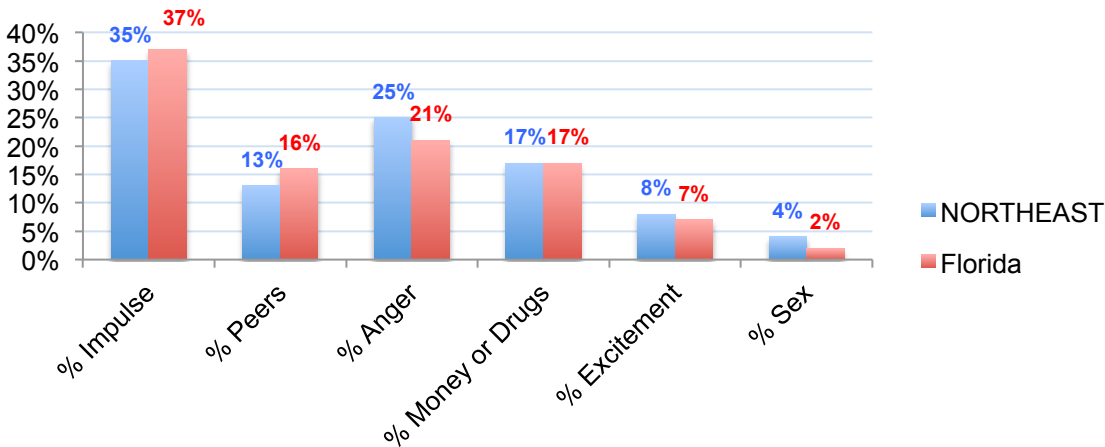


- In the Northeast Region in the 2011/2012 fiscal year, higher rates of youth given a screening by the Department of Juvenile Justice report using drugs and alcohol and having an alcohol or drug problem compared to Florida Statewide averages.

Source: Positive Assessment Change Tool

Note: The following counties did not have data available from the Northeast Region: Dixie, Flagler, Hamilton, Lafayette, Levy and Union.

Figure 24: Motivation of Crime Reported by Youth at Time of Arrest- 2011/2012



- In the Northeast Region in the 2011/2012 fiscal year, higher rates of youth given a screening by the Department of Juvenile Justice report the motivation for their crime was Anger, Excitement, and Sex compared to Florida Statewide averages.

Source: Positive Assessment Change Tool

Note: The following counties did not have data available from the Northeast Region: Dixie, Flagler, Hamilton, Lafayette, Levy and Union

Hernando County Community Anti Drug Coalition- Hernando County

MISSION: Hernando County citizens united in a common goal- to successfully prevent, significantly reduce, and effectively manage substance abuse issues in Hernando County, with a focus on Hernando County youth.

CONTACT: Tresa Watson, Executive Director at tresa@cenaps.com

ONLINE: www.hernandoantidrug.org



Safe Climate Coalition- Lake County

MISSION: The Mission of the Safe Climate Coalition (SCC) is to collaborate with community stakeholders to focus on youth substance abuse and violence reduction and prevention while maximizing resources and providing opportunities for children and families to be self-sufficient, productive contributors in Lake County and society.

VISION: Lake County: A healthy community climate, free of violence and substance abuse.

ONLINE:
<http://safeclimatecoalition.org/>

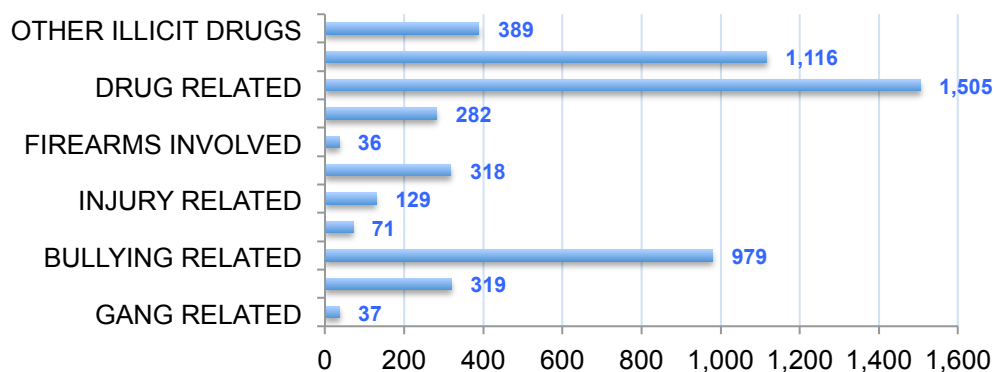
CONTACT: Debi MacIntyre, Executive Director at debi@scclake.org

SCHOOL DATA

Table 16: Amount of Incidents for Crime and Violence in Northeast Florida Schools- 2008/2009 School Year

	Total Incidents	Amount Reported to Law Enforcement
Northeast Region	17,960	7,357

Figure 25: Amount of Incidents for Crime and Violence in Northeast Florida Schools by Type of Incident- 2008/2009 School Year



Source: Florida School Indicators Report

Table 17: Percentage of Youth that Feel Safe at School- 2010

	Middle School	High School
Alachua	76.9%	76.5%
Baker	68.2%	77.6%
Bradford	71.3%	59.6%
Citrus	82.8%	84.6%
Clay	78.0%	82.9%
Columbia	74.8%	78.6%
Dixie	77.9%	66.9%
Duval	69.6%	62.5%
Flagler	79.4%	76.3%
Gilchrist	82.2%	80.4%
Hamilton	59.9%	56.8%
Hernando	77.8%	78.9%
Lafayette	88.5%	80.2%

	Middle School	High School
Lake	72.6%	76.3%
Levy	73.2%	75.5%
Marion	75.4%	83.6%
Nassau	80.2%	88.5%
Putnam	67.4%	52.8%
St. Johns	80.7%	81.2%
Sumter	81.6%	85.4%
Suwannee	70.0%	80.6%
Union	85.1%	86.8%
Volusia	76.2%	78.8%
Northeast Region	76.1%	76.1%
Florida Overall	76.3%	76.7%

- In the 2010 school year, more youth in the Northeast Region felt safe at school compared to Florida Statewide averages.

Source: Florida CHARTS

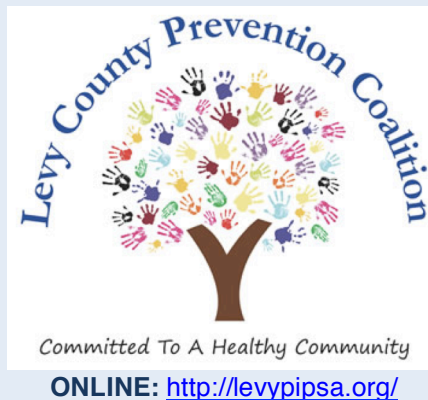
Table 18: Out of school suspension- Rate per 1,000 students- 2011

	Middle School	High School
Alachua	188.2	135.9
Baker	128.1	182.5
Bradford	170	100
Citrus	179.7	158.3
Clay	98.7	135.6
Columbia	207.9	173.1
Dixie	112.4	169.9
Duval	141.1	112.2
Flagler	162.7	129.6
Gilchrist	200	110.8
Hamilton	255.8	246.9
Hernando	172.3	164.7
Lafayette	177.9	127.9

	Middle School	High School
Lake	177.7	114.8
Levy	146.2	115.1
Marion	135.2	158.8
Nassau	118.4	62.1
Putnam	217.7	171.4
St. Johns	90.2	108.8
Sumter	178.2	170.1
Suwannee	126.9	83.1
Union	128.1	145.1
Volusia	75	76
Northeast Region	156	137.1
Florida Overall	172.3	114.4

- In the 2011 in the Northeast Region, higher rates of high school students were given out of school suspensions compared to Florida Statewide averages.

Source: Florida CHARTS



Levy County Prevention Coalition- Levy County

MISSION: To improve the quality of life for the citizens of Levy County through collaboration and capacity building between and among all sectors in order to promote healthy lifestyles.

VISION: Empowering individuals and families to make better choices, resulting in a healthier community.

CONTACT: Jonathan Lewis, Chief Operations Officer at jmlewis@ccofl.net



ONLINE: <http://www.mcchildrensalliance.org/>

Marion County Children's Alliance- Marion County

VISION: For all of Marion County's children to have a safe, healthy and nurturing environment in which to grow."

CONTACT: Nancy Castillo, Prevention Coordinator at Nancy.castillo@mcchildrensalliance.org

MORTALITY DATA

Table 19: 2010 Youth Suicide Rates- Rates per 100,000

	12-18 Years of Age	19-21 Years of Age
Alachua	2.8	5.8
Baker	12.5	29.1
Bradford	15.7	0
Citrus	0	9.4
Clay	4.9	17.7
Columbia	5.4	0
Dixie	25.3	55.1
Duval	2.9	5.3
Flagler	4.3	11.7
Gilchrist	20.4	0
Hamilton	26.7	0
Hernando	5.1	7.4
Lafayette	0	0
Lake	2.8	0
Levy	0	24.5
Marion	9.1	6.4
Nassau	20.5	13.3
Putnam	5.1	0
St. Johns	7.6	14.8
Sumter	0	0
Suwannee	0	0
Union	0	0
Volusia	4.8	13.6
Northeast Region	7.6	9.3
Florida Overall	3.4	10.4

- In the 2011 in the Northeast Region, middle school students had higher rates of suicide compared to Florida Statewide averages, whereas high school rates were lower.

Source: Florida CHARTS

Table 20: Florida Alcohol Cases Identified by Medical Examiners in Toxicology Reports- 2012

	Alcohol Cause	Alcohol Present
Florida Overall	573	3,453

Cause: Determined as the reason for death at time of death.

Present: Found in the body at the time of death, though not the sole cause of death.

Source: Florida Medical Examiners Commissioners Report

Table 21: Benzodiazepines Tracked by Medical Examiners during Toxicology Reports at Time of Death- 2012

	Alprazolam Cause	Alprazolam Present	Diazepam Cause	Diazepam Present
District 3	5	8	2	5
District 4	40	68	18	51
District 5	33	26	2	48
District 7	7	42	0	38
District 8	24	9	10	14
Northeast Region	109	153	32	156
Florida Overall	639	778	205	565

Cause: Determined as the reason for death at time of death.

Present: Found in the body at the time of death, though not the sole cause of death.

Source: Florida Medical Examiners Commissioners Report

Table 22: Pain Killers Tracked by Medical Examiners during Toxicology Reports at Time of Death- 2012

	Oxy-codone Cause	Oxy-codone Present	Hydro-codone Cause	Hydro-codone Present	Methadone Cause	Methadone Present	Morphine Cause	Morphine Present
District 3	9	11	1	11	7	3	3	5
District 4	54	41	27	80	45	26	28	31
District 5	33	33	27	28	47	17	27	29
District 7	15	28	6	26	20	10	5	12
District 8	22	20	5	17	18	8	15	28
Northeast Region	133	133	66	162	137	64	78	105
Florida Overall	735	691	224	553	512	538	415	467

Cause: Determined as the reason for death at time of death.

Present: Found in the body at the time of death, though not the sole cause of death.

Source: Florida Medical Examiners Commissioners Report

Table 23: Cocaine and Heroin Cases Identified by the Medical Examiners during Toxicology Reports at Time of Death- 2012

	Cocaine Cause	Cocaine Present	Heroin Cause	Heroin Present
District 3	9	4	0	0
District 4	45	74	10	4
District 5	25	21	3	0
District 7	10	26	1	0
District 8	21	9	2	0
Northeast Region	110	134	16	4
Florida Overall	549	769	108	9

Cause: Determined as the reason for death at time of death.

Present: Found in the body at the time of death, though not the sole cause of death.

Source: Florida Medical Examiners Commissioners Report

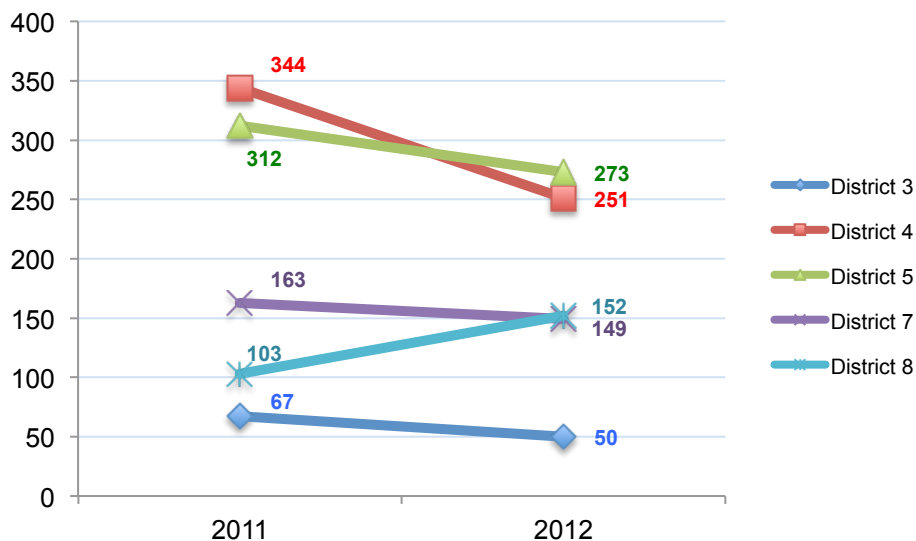
Table 24: Total Prescription Drug Deaths Identified in Toxicology Reports by Medical Examiners

	2011	2012
District 3	67	50
District 4	344	251
District 5	312	273
District 7	163	149
District 8	103	152
Northeast Region	989	875
Florida Overall	5489	4944

Note: These individuals died with one or more prescription drugs in their system. The drugs were identified as either the cause of death or merely present in the decedent. These drugs may have also been mixed with illicit drugs and/or alcohol.

- From 2011 to 2012 in Northeast Florida, there was an 11.5% decrease in the amount of prescription drugs identified in toxicology reports.

Figure 26: Total Prescription Drug Deaths Identified in Toxicology Reports by Medical Examiners



Source: Florida Medical Examiners Commissioners Report

Nassau Alcohol Crime Drug Abatement Coalition- Nassau County



ONLINE: <http://nacdac.org/>

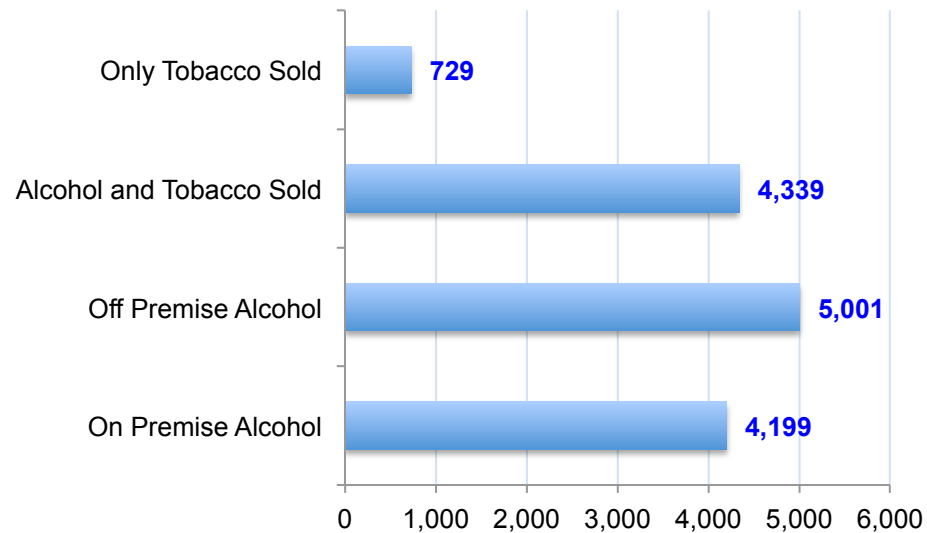
MISSION: Educate, communicate, and be a leader in community collaboration in an effort to eliminate drug, tobacco, and alcohol use among our youth/young adults while at the same time reducing criminal behavior associated with substance abuse.

VISION: Citizens of Nassau County will embrace positive life choices for drug, alcohol, and tobacco free bodies and minds and remain substance free, thereby developing into active and productive citizens.

CONTACT: Susan Woodford, Executive Director at elwoodford@yahoo.com

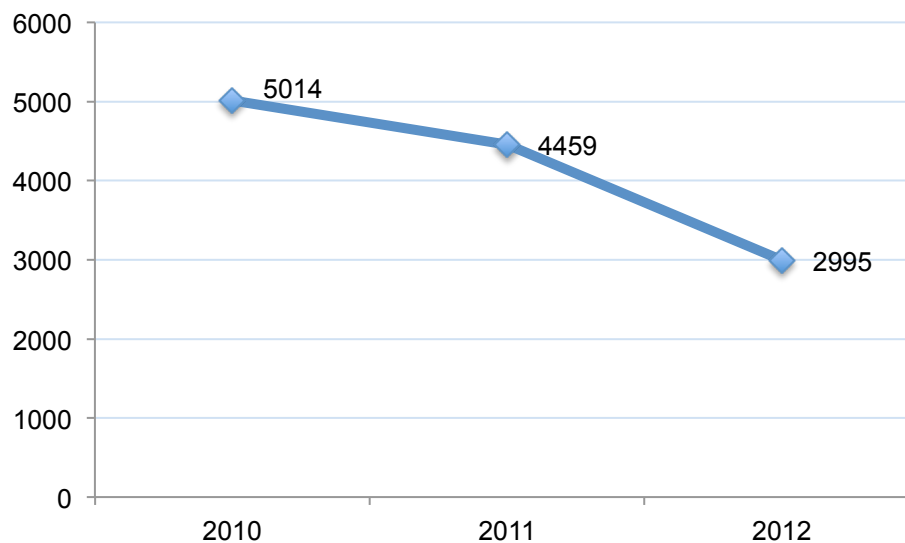
VENDOR DATA

Figure 27: Amount of Alcohol and Tobacco Licenses in the Northeast Region- 2013



Source: Florida Department of Alcohol, Beverage, and Tobacco

Figure 28: Amount of Liquor Law Violations in the Northeast Region



- From 2011 to 2012 in the Northeast Region, the amount of arrests due to liquor law violations decreased an overall 32.8%.

Source: Uniform Crime Report

An Environmental Scan was conducted by coalitions in the Northeast Region to identify alcohol, tobacco, and synthetic drug signage and sales. Data from the following counties is included in the following tables: Clay, Duval, Levy, Nassau, St. Johns, Putnam, Volusia, Marion, Citrus, Hernando, Lake, Alachua, Baker, Dixie, and Hamilton

Table 25: Amount of Environmental Scans by Vendor Type- 2013

Type of Store	Amount
Gas Station/Convenience Store	214
Grocery Store/Retail Store	75
Liquor Store	27
Smoke Shop	9
Bar/Club/Restaurant	43
TOTAL	368

Source: Northeast Region Environmental Scan

Table 26: Gas Station/Convenience Store Environmental Scan Results- 2013

Number of stores=214	Amount
Amount of signage outside of store (all types)	3,581
Amount of alcohol signage outside of store	996
Amount of tobacco signage outside of store	1,300
Amount of signage inside of store (all types)	5,469
Amount of alcohol signage inside the store	2,203
Amount of tobacco Signage inside of store	1,958
Amount of Stores with We ID signs for alcohol -24 stores were not checked of the 201	142
Amount of We ID signs for alcohol	352
Amount of Stores with We ID signs for tobacco	198
Amount of We ID signs for tobacco	470
Amount that sell synthetic drugs? (Spice, bath salts, etc.)	15

- Of the 214 gas stations/convenience stores scanned in the Northeast Region, 27.8% of signage placed outside of establishments scanned was alcohol-related.
- Of the 214 gas stations/convenience stores scanned in the Northeast Region, 36.30% of signage placed outside of establishments scanned was tobacco-related.
- Of the 190 gas stations/convenience stores that were checked for We ID signs for alcohol, 25.3% of stores did not have We ID signs present.
- Of the 214 gas stations/convenience stores that were checked for We ID signs for tobacco, 7.5% of stores did not have We ID signs present.

Source: Northeast Region Environmental Scan

Table 27: Grocery Store/Retail Store Environmental Scan Results - 2013

Number of Stores=75	Amount
Amount of signage outside of store (all types)	705
Amount of alcohol signage outside of store	174
Amount of tobacco signage outside of store	147
Amount of signage inside of store (all types)	1868
Amount of alcohol signage inside the store	527
Amount of tobacco Signage inside of store	396
Amount of We ID signs for alcohol	145
Amount of We ID signs for tobacco	170
Amount that sell synthetic drugs? (Spice, bath salts, etc.)	9

- Of the 75 grocery stores/retail stores scanned in the Northeast Region, 24.7% of signage placed outside of establishments scanned was alcohol-related.
- Of the 75 grocery stores/retail stores scanned in the Northeast Region, 20.9% of signage placed outside of establishments scanned was tobacco-related.

Source: Northeast Region Environmental Scan

Table 28: Liquor Store Environmental Scan Results- 2013

Number of stores=27	Amount
Amount of signage outside of store (all types)	525
Amount of alcohol signage outside of store	339
Amount of tobacco signage outside of store	1128
Amount of signage inside of store (all types)	994
Amount of alcohol signage inside the store	612
Amount of tobacco Signage inside of store	178
Amount of Stores with We ID signs for alcohol	20
Amount of We ID signs for alcohol	49
Amount of Stores with We ID signs for tobacco	22
Amount of We ID signs for tobacco	54
Amount that sell synthetic drugs? (Spice, bath salts, etc.)	2

- Of the 27 liquor stores scanned in the Northeast Region, 7 or 25.9% of the liquor stores scanned did not have any We ID signs for alcohol present.
- Of the 27 liquor stores scanned in the Northeast Region, 5 or 18.5% of the liquor stores scanned did not have any We ID signs for tobacco present.

Source: Northeast Region Environmental Scan

Table 29: Smoke Shop Environmental Scan Results- 2013

	Amount
Number of Stores=9	
Amount of signage outside of store (all types)	108
Amount of tobacco signage outside of store	92
Amount of signage inside of store (all types)	126
Amount of tobacco Signage inside of store	95
Amount of Stores with We ID signs for tobacco	7
Amount of We ID signs for tobacco	10
Amount that sell synthetic drugs? (Spice, bath salts, etc.)	0

- Of the 9 smoke shops scanned in the Northeast Region, zero sold synthetic drugs.

Source: Northeast Region Environmental Scan

Table 30: Bar/Club/Restaurant Environmental Scan Results- 2013

	Amount
Number of stores=43 *3 bars sold tobacco products	
Amount of signage outside of store (all types)	255
Amount of alcohol signage outside of store	192
Amount of signage inside of store (all types)	697
Amount of alcohol signage inside the store	551
Amount of Stores with We ID signs for alcohol	19
Amount of We ID signs for alcohol	54

- Of the 43 Bar/Club/Restaurants scanned in the Northeast Region, less than half had alcohol ID signs posted.

Source: Northeast Region Environmental Scan

Putnam County Anti Drug Coalition- Putnam County

MISSION: To reduce and/or eliminate the illegal use of alcohol, tobacco and other drugs in Putnam County by promotion healthy family communication and educating the public of ways to keep their loved-ones drug free.



CONTACT: Christopher Glymph, Program Director at cglymph@putnamschools.org

ONLINE: <http://classsites.putnamschools.org/antidrug/Putnam.html>

STATE OF FLORIDA- ECONOMIC COSTS

In 2010, underage drinking cost the State of Florida \$3,496 million dollars. The table below breaks down by category adverse affects associated with underage drinking, (Economic Cost of Underage Drinking).

Table 31: Cost of Underage Drinking

Category	Cost in Millions
Youth Violence	\$2,121.5
Youth Traffic Crashes	\$458.1
High Risk Sex (ages 14-20)	\$263.5
Youth Property Crime	\$386.6
Youth Injury	\$108.8
Poisonings and Psychoses	\$31.1
FAS Among Mothers Age 15-20	\$54.6
Youth Alcohol Treatment	\$71.9
Total	\$3,496 million

Source: Economic Cost of Underage Drinking study

According to the Annual Economic Impact of Alcohol in Florida and the Annual Economic Impact of Drugs in Florida (studies which analyzed the economic costs caused by alcohol and drug use in Florida), consequences from alcohol and other drugs impact individuals, their families and entire communities (Florida Alcohol and Drug Abuse Association (FADAA) and the Florida Substance Abuse and Mental Health Corporation).

Table 32: State of Florida Economic Costs of Adverse Events of Alcohol Use

Areas of Adverse Events of Alcohol	Costs
Illness	
Direct Illnesses from Alcohol	\$572,683,320
Illnesses Attributed to Alcohol	\$452,784,647
Alcohol Related Neurological Disorders/ Fetal Alcohol Syndrome	\$432,045,575
Work Loss	\$9,017,786
Injuries	\$8,905,099,639
Traffic Collisions	
Injuries	\$2,358,340,024
Fatalities	\$1,257,179,959
Quality of Life	\$3,658,397,626
Crime	
Incarceration	\$415,192,465
Victim	\$3,013,793,984
Total	\$21,074,535,025

Source: Florida Alcohol and Drug Abuse Association and the Florida Substance Abuse and Mental Health Corporation.

Table 33. State of Florida Economic Costs of Adverse Events of Drug Use

Areas of Adverse Events of Drugs	Costs
Illness	
Direct Illnesses from Drugs	\$97,102,980
Work Loss	\$6,770,627
Deaths	\$20,429,346,232
Crime	
Incarceration	\$1,077,450,638
Victim	\$1,257,173,304
Total	\$22,867,843,781

Source: Florida Alcohol and Drug Abuse Association and the Florida Substance Abuse and Mental Health Corporation.



PACT Prevention Coalition of St. Johns County- St. Johns County

MISSION: To make St. John's County a healthy, substance-free community through the reduction and prevention of alcohol and drug abuse by our youth by **P**revention, **A**dvocacy, **C**hoices and **T**eamwork.

VISION:

CONTACT: Lynnette Horwath at Lynnette@pactprevention.org

ONLINE: <http://www.pactprevention.org/>



One Voice for Volusia- Volusia County

MISSION: Through collaboration One Voice for Volusia mobilizes all sectors of the community by strengthening our organized capacity to meet human needs.

CONTACT: Julie Barrow at julie@ovfv.org.

ONLINE: <http://www.onevoiceforvolusia.org/>